

ROHN [®]
 PRODUCTS, LLC

**EUROCONTROLS AUTOMATION INC.
 MICRONESIA
 (GALVANIZED STEEL)**

FILE NO. 219270

REVISIONS

REV	DESCRIPTION	DWN	CHK	APP

ROHN [®]
 PRODUCTS, LLC

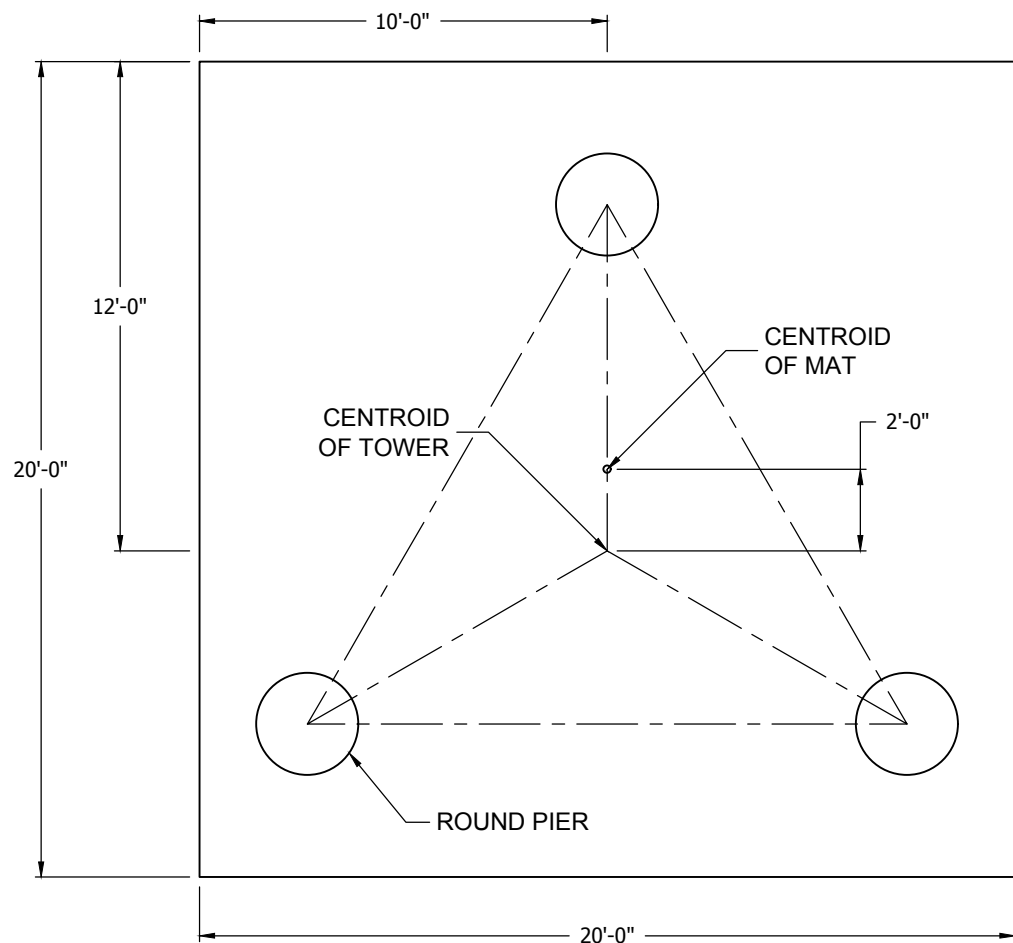
PO BOX 5999
 PEORIA, IL 61601-5999
 TOLL FREE 800-727-ROHN

THIS DRAWING IS THE PROPERTY OF ROHN. IT IS NOT TO BE REPRODUCED, COPIED OR TRACED IN WHOLE OR IN PART WITHOUT OUR WRITTEN CONSENT.

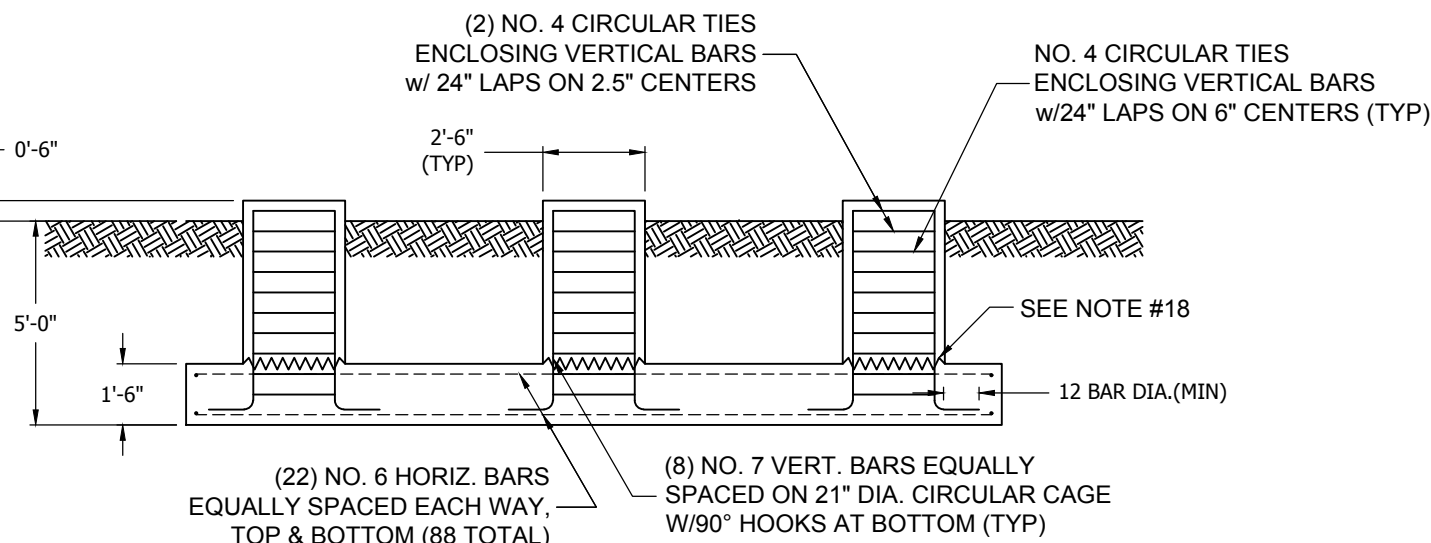
120' SSV TOWER ASSEMBLY

DWN: JEC	CHK'D: CHW	DATE: 9/15/2016
ENG'R:	SHEET #: 1 OF 1	
PRJ. ENG'R:	PRJ. MANG'R:	

DRAWING NO: 219270CP	REV: 0
-------------------------	-----------



PLAN VIEW



ELEVATION VIEW

FACTORED REACTIONS

Maximum O.T.M = 1,200.71 FT-K
 Total Tower Wt = 8.66 KIPS
 Total Shear = 19.31 KIPS
 Max. Shear/Leg = 11.34 KIPS
 Max. Ten./Leg = 83.95 KIPS
 Max. Comp./Leg = 97.76 KIPS

CONCRETE VOLUME (cu.yds)

	ROUND
PIER	2.2
PAD	22.2
TOTAL	24.4

GENERAL NOTES

1. A GEOTECHNICAL REPORT HAS NOT BEEN PROVIDED TO ROHN FOR FOUNDATION DESIGN. PURCHASER HAS REQUESTED FOUNDATION DESIGN TO BE BASED ON PRESUMPTIVE SAND SOIL DESIGN PARAMETERS. IT IS THE RESPONSIBILITY OF THE PURCHASER TO VERIFY THAT PRESUMPTIVE SOIL DESIGN PARAMETERS ARE APPROPRIATE BASED UPON ACTUAL SOIL CONDITIONS. FOUNDATION DESIGN MODIFICATIONS MAY BE REQUIRED IN THE EVENT THE FOLLOWING DESIGN PARAMETERS ARE NOT APPLICABLE FOR THE SUBSURFACE CONDITIONS ENCOUNTERED.

- A) ULTIMATE SOIL BEARING PRESSURE AT 5 FT DEPTH = 3,000 PSF.
- B) GROUND WATER TABLE IS AT OR BELOW FOUNDATION DEPTH.
- C) MAXIMUM FROST PENETRATION DEPTH LESS THAN FOUNDATION DEPTH.

2. WORK SHALL BE IN ACCORDANCE WITH LOCAL CODES, SAFETY REGULATIONS AND UNLESS OTHERWISE NOTED, THE LATEST REVISION OF ACI 318, "BUILDING CODE REQUIREMENTS FOR REINFORCED CONCRETE". PROCEDURES FOR THE PROTECTION OF EXCAVATIONS, EXISTING CONSTRUCTION AND UTILITIES SHALL BE ESTABLISHED PRIOR TO FOUNDATION INSTALLATION.

3. CONCRETE MATERIALS SHALL CONFORM TO THE APPROPRIATE STATE REQUIREMENTS FOR EXPOSED STRUCTURAL CONCRETE.

4. PROPORTIONS OF CONCRETE MATERIALS SHALL BE SUITABLE FOR THE INSTALLATION METHOD UTILIZED AND SHALL RESULT IN DURABLE CONCRETE FOR RESISTANCE TO LOCAL ANTICIPATED AGGRESSIVE ACTIONS. THE DURABILITY REQUIREMENTS OF ACI 318 CHAPTER 4 SHALL BE SATISFIED BASED ON THE CONDITIONS EXPECTED AT THE SITE. AS A MINIMUM, CONCRETE SHALL DEVELOP A MINIMUM COMPRESSIVE STRENGTH OF 4,500 PSI IN 28 DAYS.

5. MAXIMUM SIZE OF AGGREGATE SHALL NOT EXCEED SIZE SUITABLE FOR INSTALLATION METHOD UTILIZED OR 1/3 CLEAR DISTANCE BEHIND OR BETWEEN REINFORCING. MAXIMUM SIZE MAY BE INCREASED TO 2/3 CLEAR DISTANCE PROVIDED WORKABILITY AND METHODS OF CONSOLIDATION SUCH AS VIBRATING WILL PREVENT HONEYCOMBS OR VOIDS.

6. REINFORCEMENT SHALL BE DEFORMED AND CONFORM TO THE REQUIREMENTS OF ASTM A615 GRADE 60 UNLESS OTHERWISE NOTED. SPLICES IN REINFORCEMENT SHALL NOT BE ALLOWED UNLESS OTHERWISE INDICATED.

7. WELDING IS PROHIBITED ON REINFORCING STEEL AND EMBEDMENTS.

8. MINIMUM CONCRETE COVER FOR REINFORCEMENT SHALL BE 3 INCHES (76 MM) UNLESS OTHERWISE NOTED. APPROVED SPACERS SHALL BE USED TO INSURE A 3 INCH (76 MM) MINIMUM COVER ON REINFORCEMENT.

9. CONCRETE COVER FROM TOP OF FOUNDATION TO ENDS OF VERTICAL REINFORCEMENT SHALL NOT EXCEED 3 INCHES (76MM) NOR BE LESS THAN 2 INCHES (51MM).

10. FOUNDATION DESIGN ASSUMES STRUCTURAL BACKFILL TO BE COMPACTED IN 8 INCH (200 MM) MAXIMUM LAYERS TO 95% OF MAXIMUM DRY DENSITY AT OPTIMUM MOISTURE CONTENT IN ACCORDANCE WITH ASTM D698. ADDITIONALLY, STRUCTURAL BACKFILL MUST HAVE A MINIMUM COMPACTED UNIT WEIGHT OF 110 POUNDS PER CUBIC FOOT (17 KN/M3)

11. FOUNDATION DESIGN ASSUMES LEVEL GRADE AT STRUCTURE SITE.

12. FOUNDATION INSTALLATION SHALL BE SUPERVISED BY PERSONNEL KNOWLEDGEABLE AND EXPERIENCED WITH THE PROPOSED FOUNDATION TYPE. CONSTRUCTION SHALL BE IN ACCORDANCE WITH GENERALLY ACCEPTED INSTALLATION PRACTICES.

13. FOUNDATION DESIGN ASSUMES FIELD INSPECTIONS WILL BE PERFORMED TO VERIFY THAT CONSTRUCTION MATERIALS, INSTALLATION METHODS AND ASSUMED DESIGN PARAMETERS ARE ACCEPTABLE BASED ON CONDITIONS EXISTING AT THE SITE.

14. FOR FOUNDATION AND ANCHOR TOLERANCES SEE DRAWING A810214.

15. LOOSE MATERIAL SHALL BE REMOVED FROM BOTTOM OF EXCAVATION PRIOR TO CONCRETE PLACEMENT. SIDES OF EXCAVATION SHALL BE ROUGH AND FREE OF LOOSE CUTTINGS.

16. CONCRETE SHALL BE PLACED IN A MANNER THAT WILL PREVENT SEGREGATION OF CONCRETE MATERIALS, INFILTRATION OF WATER OR SOIL AND OTHER OCCURRENCES WHICH MAY DECREASE THE STRENGTH OR DURABILITY OF THE FOUNDATION.

17. CONCRETE PREFERABLY SHALL BE PLACED AGAINST UNDISTURBED SOIL. WHEN FORMS ARE NECESSARY, THEY SHALL BE REMOVED PRIOR TO PLACING STRUCTURAL BACKFILL.

18. CONSTRUCTION JOINTS, IF REQUIRED AT THE BASE OF THE PIERS, MUST BE INTENTIONALLY ROUGHENED TO A FULL AMPLITUDE OF 1/4 INCH (6 MM). FOUNDATION DESIGN ASSUMES NO OTHER CONSTRUCTION JOINTS.

19. TOP OF FOUNDATION OUTSIDE LIMITS OF ANCHOR BOLTS SHALL BE SLOPED TO DRAIN WITH A FLOATED FINISH. AREA INSIDE LIMITS OF ANCHOR BOLTS SHALL BE LEVEL WITH A SCRATCHED FINISH.

20. EXPOSED EDGES OF CONCRETE SHALL BE CHAMFERED 3/4" X 3/4" (19MM X 19MM) MINIMUM.

NOTE: SEE STRUCTURE ASSEMBLY DRAWING FOR FOUNDATION LAYOUT AND ANCHORAGE EMBEDMENT DRAWING NUMBER.

FILE NO. 219270

REVISIONS

REV	DESCRIPTION	DWN	CHK	APP



PO BOX 5999
 PEORIA, IL 61601-5999
 TOLL FREE 800-727-ROHN

THIS DRAWING IS THE PROPERTY OF ROHN. IT IS NOT TO BE REPRODUCED, COPIED OR TRACED IN WHOLE OR IN PART WITHOUT OUR WRITTEN CONSENT.

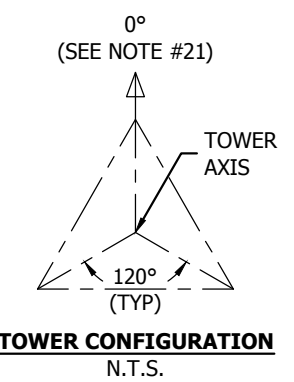
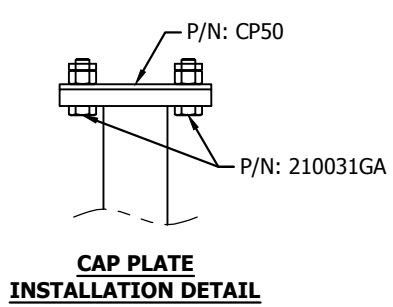
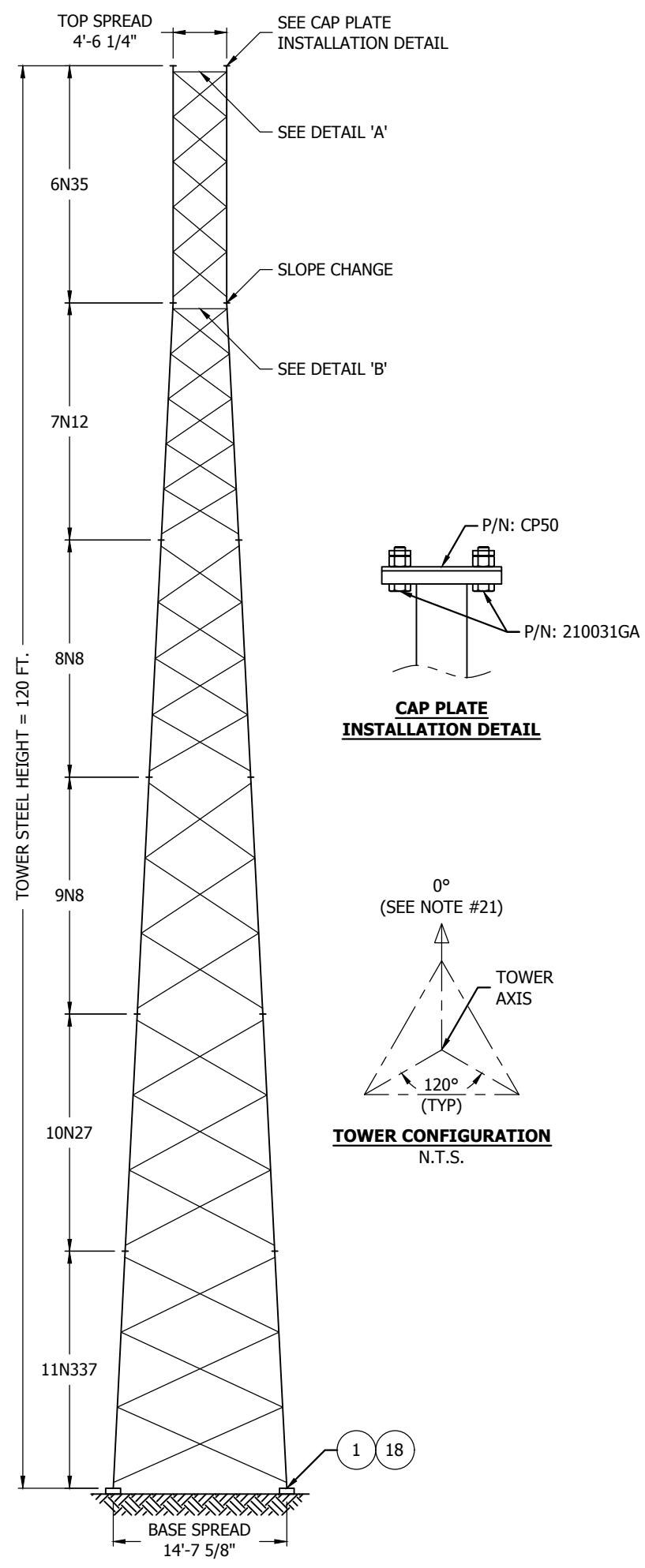
MAT W/RAISED PIERS FOUNDATION PER ANSI/TIA-222-G PRESUMPTIVE SAND

DWN: DWG CHK'D: HA DATE: 09/13/16

ENG'R: HA SHEET #: 1 OF 1

PRJ. ENG'R: DWG PRJ. MANG'R:

DRAWING NO: 219270-01-F1 REV: 0



TOWER DESIGN LOADING		
DESIGN WIND LOAD PER ANSI/TIA-222-G USING THE FOLLOWING DESIGN CRITERIA: BASIC WIND SPEED (NO ICE): 134.22 MPH (216 KPH) ULTIMATE WIND SPEED PER ASCE 7-10 STRUCTURE CLASS: III EXPOSURE CATEGORY: D TOPOGRAPHIC CATEGORY: 1 THIS TOWER IS DESIGNED TO SUPPORT THE FOLLOWING LOADS:		
ELEVATION (FT)	ANTENNA TYPE	LINE SIZE (NOM)
TOP	LIGHTNING ROD	-
120	(3)1980MM X 270MM X 140MM PANELS & (3) 370MM X 320MM X 170MM RRUS LEG MOUNTED	(3) 1/2"
80	(3) 3 FT. HP DISHES [0][120][240] (6GHZ)	(3) 1/2"

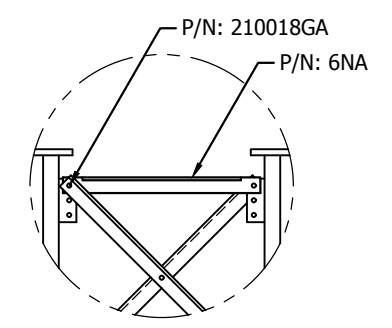
NOTE: ANTENNA AZIMUTH IS SHOWN IN DEGREES WITHIN THE [BRACKETS].

GENERAL NOTES:

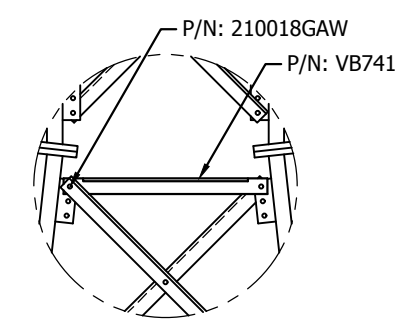
- ROHN PRODUCTS, LLC TOWER DESIGNS CONFORM TO ANSI/TIA-222-G UNLESS OTHERWISE SPECIFIED UNDER TOWER DESIGN LOADING.
- ANTENNAS AND LINES LISTED IN TOWER DESIGN LOADING TABLE ARE PROVIDED BY OTHERS UNLESS OTHERWISE SPECIFIED.
- THE DESIGN LOADING CRITERIA INDICATED HAS BEEN PROVIDED TO ROHN. THE DESIGN LOADING CRITERIA HAS BEEN ASSUMED TO BE BASED ON SITE-SPECIFIC DATA IN ACCORDANCE WITH ANSI/TIA-222-G AND MUST BE VERIFIED BY OTHERS PRIOR TO INSTALLATION.
- SEE INDIVIDUAL SECTION ASSEMBLY DRAWINGS FOR PART NUMBERS AND SECTION ASSEMBLY DETAILS.
- STEP BOLTS ARE PROVIDED AS A CLIMBING FACILITY FOR THE INSTALLATION OF THE STRUCTURE.
- REFER TO THE LATEST REVISIONS OF THE DRAWINGS SHOWN IN THE BILL OF MATERIALS.
- A NUT LOCKING DEVICE IS PROVIDED FOR ALL TOWER AND ANCHOR BOLTS.
- THE LEG PART NUMBER IS STAMPED AT THE BOTTOM OF EACH LEG OF EACH SECTION.
- DESIGN ASSUMES LEVEL GRADE AT TOWER SITE.
- WORK SHALL BE IN ACCORDANCE WITH ANSI/TIA-222-G, "STRUCTURAL STANDARDS FOR STEEL ANTENNA TOWERS AND ANTENNA SUPPORTING STRUCTURES".
- TOLERANCE ON TOWER STEEL HEIGHT IS EQUAL TO PLUS 1% OR MINUS 1/2%.
- PURCHASER SHALL VERIFY THE INSTALLATION IS IN CONFORMANCE WITH LOCAL, STATE, AND FEDERAL REQUIREMENTS FOR OBSTRUCTION MARKING AND LIGHTING.
- TOWER MEMBER DESIGN DOES NOT INCLUDE STRESSES DUE TO ERECTION SINCE ERECTION EQUIPMENT AND CONDITIONS ARE UNKNOWN. DESIGN ASSUMES COMPETENT AND QUALIFIED PERSONNEL WILL ERECT THE TOWER.
- DESIGN ASSUMES THAT, AS A MINIMUM, MAINTENANCE AND INSPECTION WILL BE PERFORMED OVER THE LIFE OF THE STRUCTURE IN ACCORDANCE WITH ANSI/TIA-222-G.
- ALL TOWER ACCESSORIES AND/OR MOUNTS THAT ARE NOT SHOWN IN B.O.M., TO BE SUPPLIED BY OTHERS.
- NUMBERS SHOWN IN BALLOONS DENOTE ITEM NUMBERS IN BILL OF MATERIAL.
- TOWER ORIENTATION TO BE DETERMINED BY OTHERS.
- DESIGN ASSUMES ALL ANTENNAS ARE MOUNTED SYMMETRICALLY TO MINIMIZE TORQUE.
- ROHN SHALL HAVE THE OPTION TO REVIEW FINAL DISH LOCATIONS, AZIMUTHS AND MOUNTS TO VERIFY THAT ASSUMED TORQUE VALUES AND LOCAL STRESSES ARE NOT EXCEEDED.
- DISH AZIMUTHS SHOWN ARE NOMINAL AZIMUTHS USED FOR DESIGN. ACTUAL AZIMUTHS (TO BE DETERMINED BY OTHERS) MUST NOT RESULT IN INCREASED DESIGN LOADS.
- THE TOWER AZIMUTH SHOWN IS A RELATIVE AZIMUTH USED TO ESTABLISH THE RELATIVE POSITION OF ANTENNAS WITH RESPECT TO THE TOWER FOR DESIGN.
- STANDARD INSIDE CORNER MOUNTED CLIMBING LADDER WITH SAFETY DEVICE IS PROVIDED FOR CLIMBING THE ENTIRE TOWER HEIGHT.
- THE PURCHASER SHALL VERIFY THAT ACTUAL SITE SOIL PARAMETERS MEET OR EXCEED ANSI/TIA-222-G PRESUMPTIVE SAND SOIL PARAMETERS.
- ONE 9-HOLE WAVEGUIDE LADDER WITH 4'-0" ON CENTER RUNG SPACING IS PROVIDED FROM BASE TO TOP OF TOWER FOR SNAP-ON HANGERS.
- WAVEGUIDE AND CLIMBING LADDER SECTIONS MAY REQUIRE FIELD CUTTING TO PROPER LENGTH AFTER ASSEMBLY. ALL FIELD CUTTING MUST BE REPAIRED WITH COLD GALV OR ZINC RICH PAINT. (BY OTHERS)

MAXIMUM FACTORED REACTIONS	
COMPRESSION =	97.8 KIPS
TENSION =	84.0 KIPS
TOTAL SHEAR =	19.3 KIPS
O.T.M. =	1,200.7 FT-KIPS

ANCHOR MATERIAL				
ITEM	QTY	PART NO.	DESCRIPTION	DWG. NO.
1	1	12D1464FST	ANCHOR BOLT STR ASSY 12-7/8X60	12D1464FST
219270LA - TOWER ACCESSORIES				
ITEM	QTY	PART NO.	DESCRIPTION	DWG. NO.
2	1	11N337	SECTION ASSY 11N 20' 3.5EH BAS	A050204
3	1	10N27	SECTION ASSY 10N 20' 3EH	A780415
4	1	9N8	SECTION ASSY 9N 20' 2.5EH	A780327
5	1	8N8	SECTION ASSY 8N 20' 2.5STD	A780261
6	1	7N12	SECTION ASSY 7N 20' 2STD	A780153
7	1	6N35	SECTION ASSY 6NST 20' 2STD	A780233
8	1	VB690	GIRT ASSY 6NST L1.5X.13 .5"BOL	N/A
9	1	VB803A	GIRT ASSY 7N L1.5X.13" .5"BOLT	N/A
10	1	KH6747A	ROD ASSY LTNG&EXT 5" FL PL	C990952
11	2	CP5A1	PLATE ASSY CAP 5.00 FL PL	N/A
12	1	VY3022A	LADDER ASSY 20' STD INS COR	C030408
13	1	VY3021A	LADDER ASSY 40' INS COR 7N&8N	C030408
14	3	VY3093A	LADDER ASSY 20' STD INS COR	C821692
15	3	T20UM	MOUNT DISH ASSY LEG 2TAP U 5'	C800119
16	3	VY3936A	MOUNT ANTEN ASSY LEG 2 2STD5'	B831254
17	6	WL20F94KD	LADDER ASSY W/G FACE 20' 9HOLE	C991018
18	3	BGK7GGX	KIT BASE GRD SSV 7/8"AB GALV.	B070997
19	1	TT150LAD	SAFETY DEVICE TUF TUG LAD 150'	DWG-0121
20	1	TT-WG-500-W/SMC	WIRE GRAB W/CARABINER	N/A
21	1	TTFBH-4D	HARNESSTUF TUG 4-D RING	N/A
22	1	ACWS	SIGN ANTI-CLIMB WARNING ASSY	N/A
23	1	ROHN-TAG	STANDARD ROHN TAG	N/A
24	1	A790135	DRAWING BOLT ASSY	A790135
25	1	B651264	STEPBOLT DETAIL	B651264



DETAIL 'A'
(ASSY P/N: VB690)



DETAIL 'B'
(ASSY P/N: VB803A)

FILE NO. 219270

REVISIONS

REV	DESCRIPTION	DWN	CHK	APP

ROHN
PRODUCTS LLC
PO BOX 5999
PEORIA, IL 61601-5999
TOLL FREE 800-727-ROHN

THIS DRAWING IS THE PROPERTY OF ROHN. IT IS NOT TO BE REPRODUCED, COPIED OR TRACED IN WHOLE OR IN PART WITHOUT OUR WRITTEN CONSENT.

EUROCONTROLS AUTOMATION INC.
120' SSV TOWER ASSEMBLY

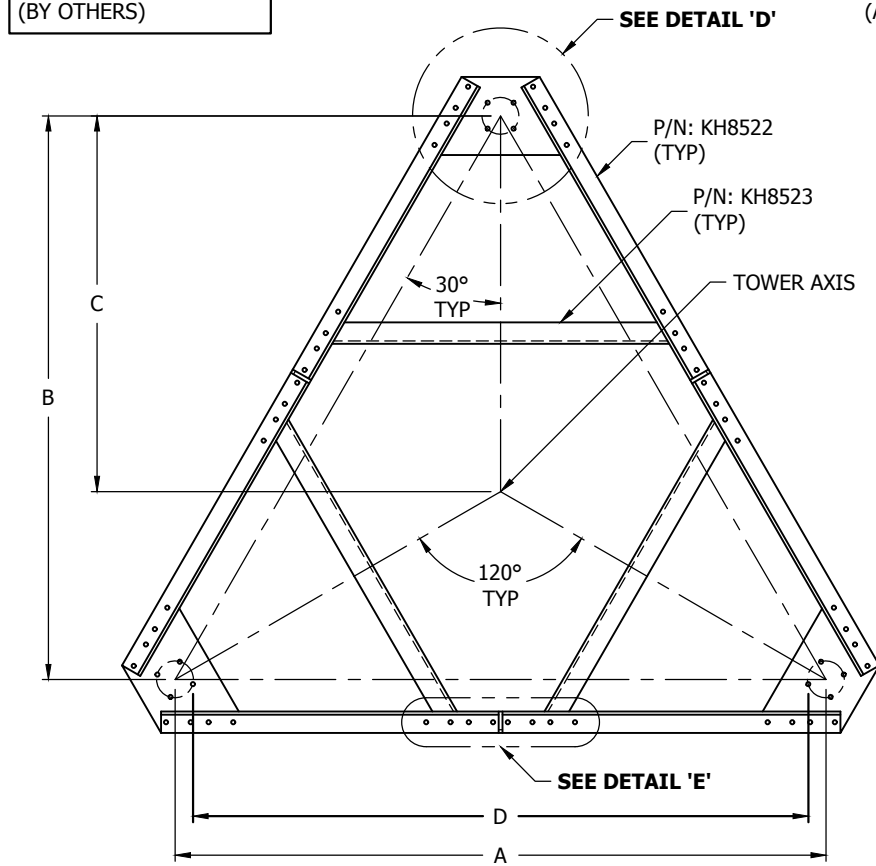
MICRONESIA

DWN: JHY	CHK'D: KTL	DATE: 09/27/2016
ENG'R: HA	SHEET #: 1 OF 1	
PRJ. ENG'R: DWG	PRJ. MANG'R: DO	

DRAWING NO: 219270-01-A1

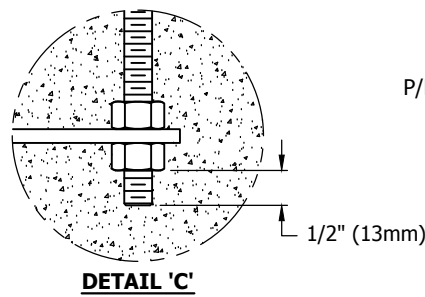
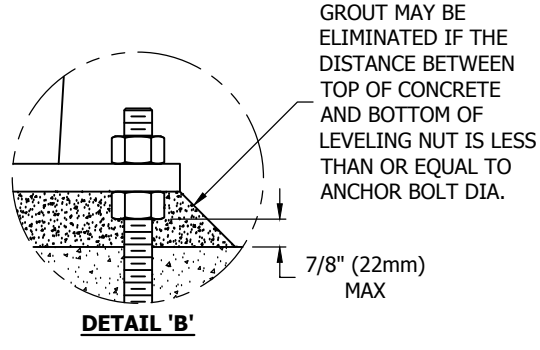
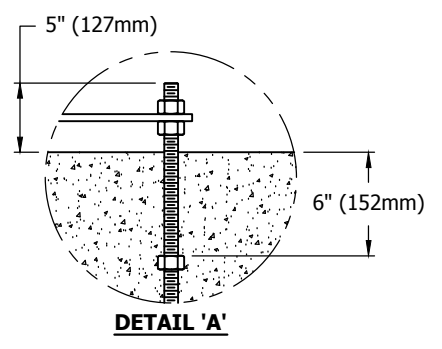
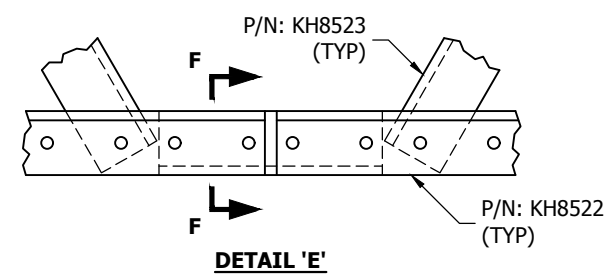
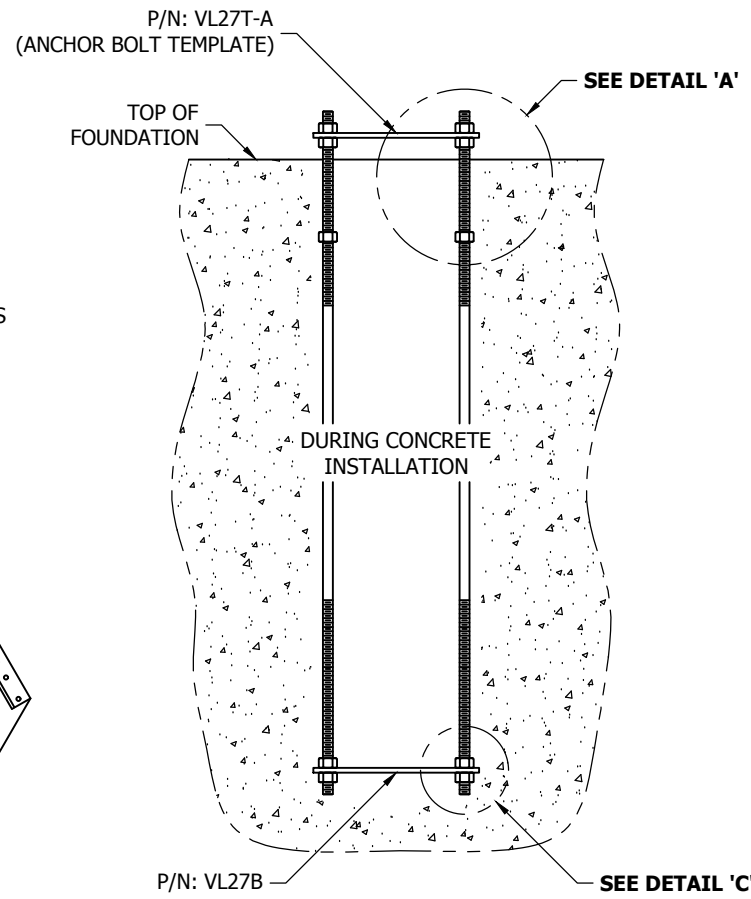
REV: 0

LEVELING BLOCKS TO BE LOCATED AS REQUIRED (BY OTHERS)

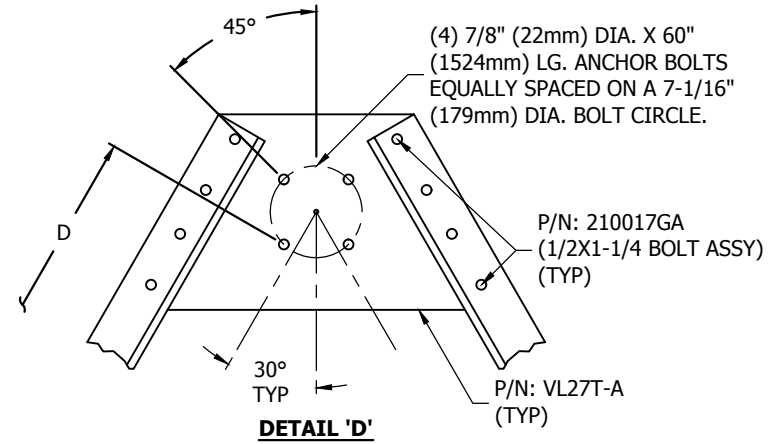
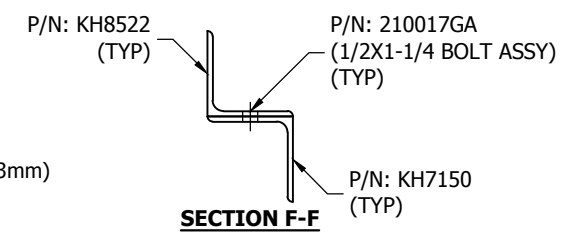
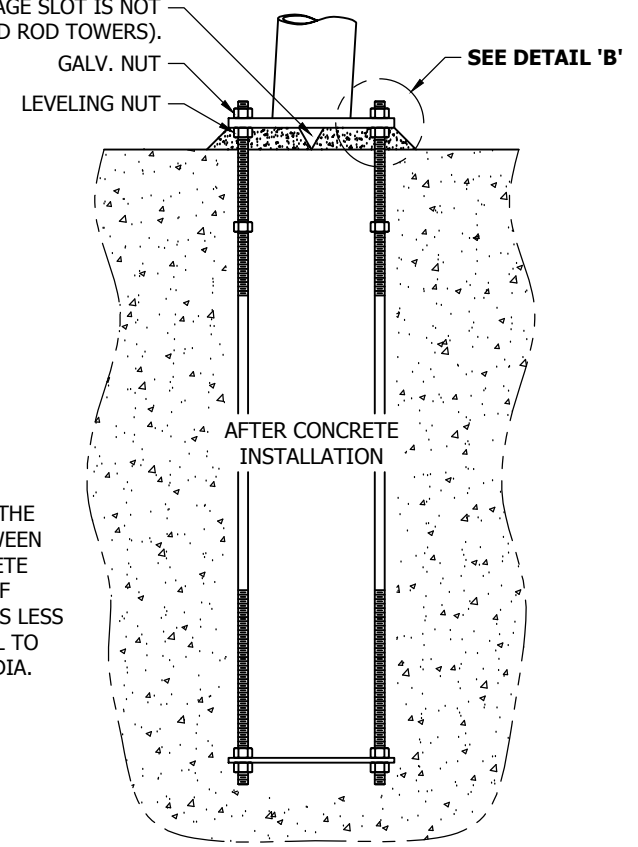


PLAN VIEW
N.T.S.

A	B	C	D
14'-7 5/8" (4.461M)	12'-8 1/8" (3.864M)	8'-5 3/8" (2.575M)	14'-0 13/16" (4.288M)



DRAINAGE SLOT MUST BE KEPT FREE OF OBSTRUCTIONS (DRAINAGE SLOT IS NOT REQUIRED FOR SOLID ROD TOWERS).



!!! WARNING !!!
PRIOR TO PLACING CONCRETE:

- CHECK THAT THE TEMPLATE ANCHOR BOLT CIRCLE MATCHES THE ANCHOR BOLT CIRCLE SHOWN ON THE STRUCTURAL DRAWING.
- CALL ROHN (309)-566-3000 FOR ANY DISCREPANCY.

ANCHOR BOLT INSTALLATION TOLERANCES

- FACE SPREAD DIMENSION CENTER-TO-CENTER OF ANCHOR BOLT CIRCLES - PLUS OR MINUS 1/16" (2mm) OR 1/16" (2mm) PER 20 FT. (6m) OF FACE SPREAD.
- MAXIMUM DIFFERENCE BETWEEN ANY TWO FOUNDATION ELEVATIONS - 1/2" (13mm).
- CONCRETE DIMENSIONS - PLUS OR MINUS 1" (25mm).
- DEPTH OF FOUNDATION - PLUS 3" (76mm) OR MINUS 0".
- DRILLED FOUNDATIONS OUT OF PLUMB - 1.0 DEGREE.
- REINFORCING STEEL PLACEMENT - PER A.C.I. 301.
- PROJECTION OF EMBEDMENTS - PLUS OR MINUS 1/8" (3mm).
- VERTICAL EMBEDMENTS OUT OF PLUMB - 1/2 DEGREE.
- MAXIMUM DISTANCE FROM CENTERLINE OF ANCHOR BOLTS TO CENTERLINE OF FOUNDATION - 1/24 OF PIER DIAMETER UP TO A MAXIMUM OF 2" (50mm).
- ANCHOR BOLT SPACING - 1/16" (2mm).
- ANCHOR BOLT CIRCLE ORIENTATION - 1/4 DEGREE.
- ANCHOR BOLT CIRCLE DIAMETER - PLUS OR MINUS 1/16" (2mm).

- !!! WARNING !!!**
- ENSURE DIMENSIONS A-D ARE CORRECT ON ALL FACES PRIOR TO PLACING CONCRETE AND THAT THE NUMBER AND SIZE OF ANCHOR BOLTS MATCHES THE STRUCTURE DRAWING.
 - AFTER ANCHOR BOLTS ARE INSTALLED AND CONCRETE HAS TAKEN ITS INITIAL SET, ANCHOR BOLTS MUST NOT BE MOVED, BENT OR REALIGNED IN ANY MANNER.

ANCHOR BOLT TIGHTENING NOTES

- NUTS, THREADS AND ALL NUT CONTACT SURFACES MUST BE CLEANED AND LUBRICATED AFTER CONCRETE INSTALLATION AND IMMEDIATELY BEFORE INSTALLATION OF LEVELING AND TOP NUTS. NUTS MUST BE FREE TO MOVE THROUGHOUT THE ENTIRE LENGTH OF THE ANCHOR BOLT THREAD PROJECTION.
- AFTER LEVELING THE LEVELING NUTS AND SETTING THE BASE PLATE, TOP NUTS MUST BE INSTALLED IN AN INCREMENTAL STAR TIGHTENING SEQUENCE TO A SNUG TIGHT CONDITION FOLLOWED BY TIGHTENING THE LEVELING NUTS IN A SIMILAR PATTERN TO A SNUG TIGHT CONDITION. SNUG TIGHT IS DEFINED BY THE TIGHTNESS OBTAINED WITH THE EFFORT OF ONE PERSON WITH A 12 INCH NOMINAL LENGTH WRENCH.
- AFTER ALL TOP AND LEVELING NUTS ARE TIGHTENED TO A SNUG TIGHT CONDITION, TOP NUTS SHALL BE FURTHER TIGHTENED IN AN INCREMENTAL STAR PATTERN WITH THE LEVELING NUTS SECURED TO RESULT IN A 1/3 TOP NUT ROTATION FOR ANCHOR BOLTS 1-1/2 INCHES OR LESS IN DIAMETER, OR A 1/6 TOP NUT ROTATION FOR ANCHOR BOLTS GREATER THAN 1-1/2 INCHES IN DIAMETER.

NOTES

- ALL ANCHOR BOLTS MUST MEET OR EXCEED REQUIREMENTS OF A.S.T.M. F1554-S2, S5 GRADE 105.
- ANCHOR BOLTS ARE GALVANIZED FULL LENGTH UNLESS OTHERWISE SPECIFIED.
- GROUT TO BE 5000 PSI MIN. ULTIMATE STRENGTH, 7-DAY NON-SHRINK AND NON-METALLIC.
- SPECIAL CARE MUST BE TAKEN WHEN LIFTING ANCHOR BOLT CLUSTER TO PREVENT ANCHOR BOLT TEMPLATE DISTORTION.
- ANCHOR BOLT ASSEMBLY MUST BE ADEQUATELY SUPPORTED AND RESTRAINED TO PREVENT MOVEMENT OF THE CLUSTER DURING CONCRETE INSTALLATION.
- IT IS THE RESPONSIBILITY OF THE FOUNDATION CONTRACTOR TO VERIFY THAT THE CORRECT ANCHOR BOLT TEMPLATE AND FOUNDATION SHOWN ON RESPECTIVE SITE DRAWINGS ARE BEING USED.
- IT IS THE RESPONSIBILITY OF THE FOUNDATION DESIGN ENGINEER TO INSURE THAT THE ANCHORAGES PROVIDED ARE COMPATIBLE WITH THE PROPOSED FOUNDATION DESIGNS AND THAT THE CAPACITIES OF THE ANCHORAGES ARE NOT LIMITED BY THE STRENGTH OF THE FOUNDATIONS.

FILE NO.				
REVISIONS				
REV	DESCRIPTION	DWN	CHK	APP
1	REVISED TO LATEST FORMAT	JEC	CHW	DWG
DATE: 9/15/2016				

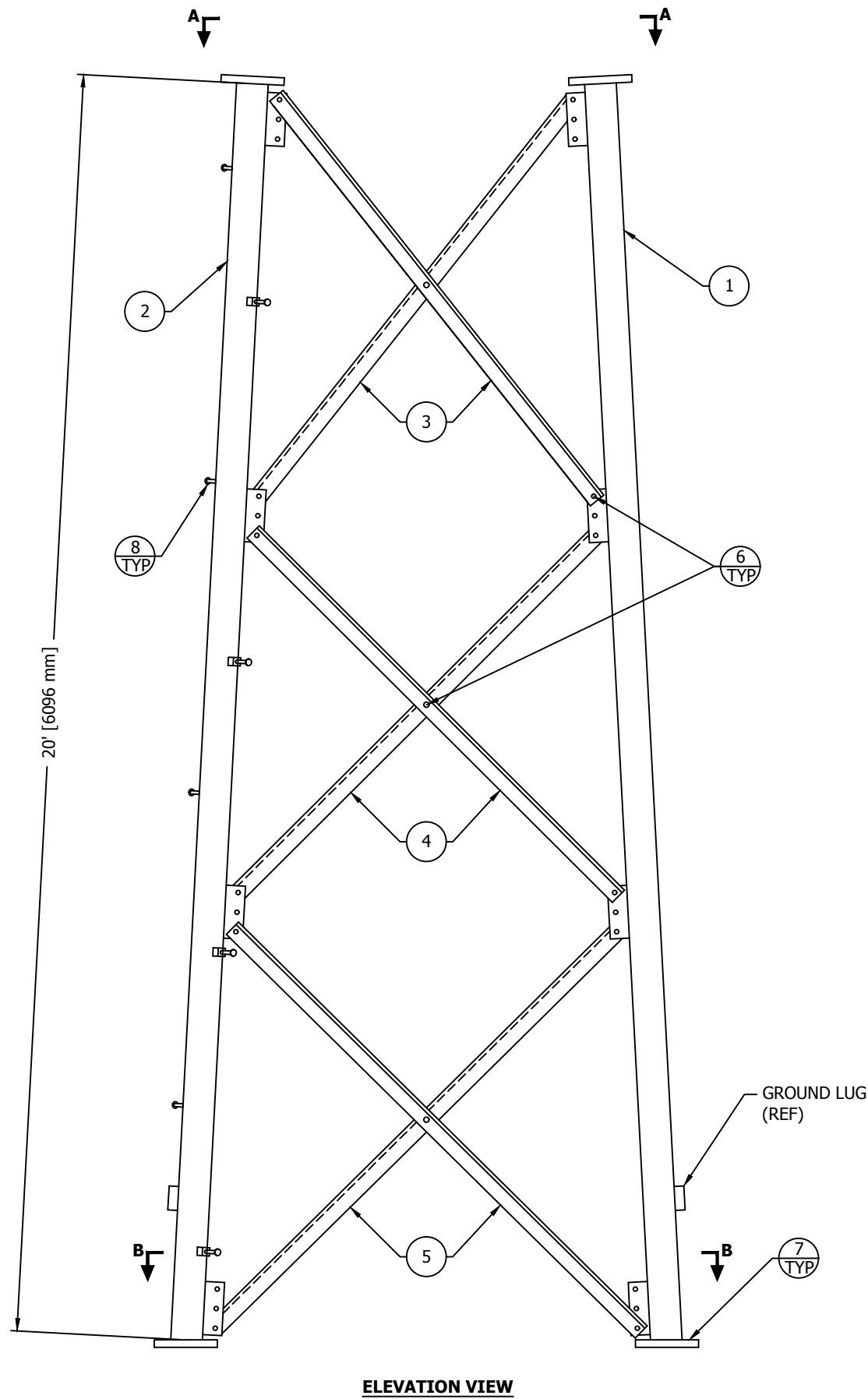
ROHN[®]
PRODUCTS LLC
PO BOX 5999
PEORIA, IL 61601-5999
TOLL FREE 800-727-ROHN

THIS DRAWING IS THE PROPERTY OF ROHN. IT IS NOT TO BE REPRODUCED, COPIED OR TRACED IN WHOLE OR IN PART WITHOUT OUR WRITTEN CONSENT.

ANCHOR BOLT LAYOUT
7/8" [22MM]Ø BOLTS (12D1464FST)

DWN: JEC	CHK'D: MDF	DATE: 8/13/2014
ENGR: DWG	SHEET #: 1 OF 1	
PRJ. ENGR:	PRJ. MANG'R:	

DRAWING NO: 12D1464FST	REV: 1
------------------------	--------



ELEVATION VIEW

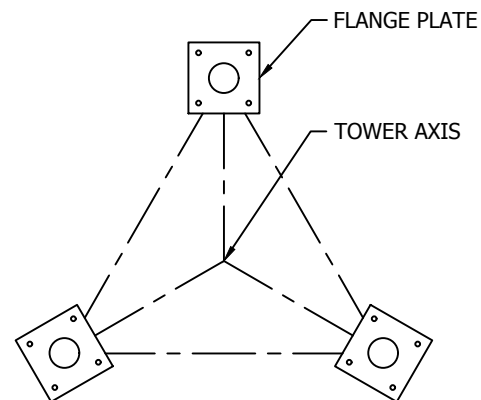
SECTION ASSEMBLY P/N: 11N337

BILL OF MATERIAL

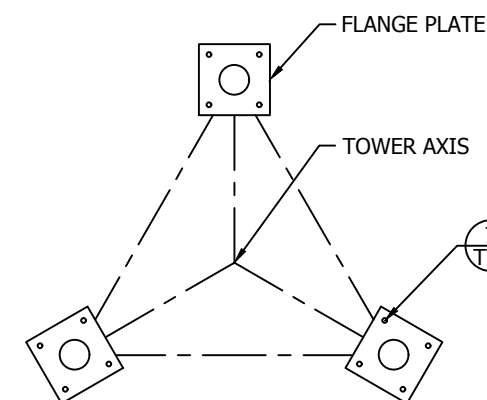
ITEM	PART NO.	QTY	DESCRIPTION	
1	VL704XL	2	LEG SSV 9-11N 3.5EH 20' 7-7	[PIPE 89mm EH]
2	VL704SXL	1	LEG SSV 9-11N 3.5EH 20' 7-7	[PIPE 89mm EH]
3	N111	6	BRACE DS SS11T L2.5X.19X14.04'	[L 64x64x5]
4	N112	6	BRACE DS SS11T L2.5X.19X14.64'	[L 64x64x5]
5	N113	6	BRACE DS SS11T L2.5X.19X15.16'	[L 64x64x5]
6	210017GA	45	BOLT ASSY 1/2 X 1-1/4 HSB A325	[M13x32]
7	110163	12	Nut 7/8 (Jam - Pal) HDG	[M22]
8	5/8STEP	16	BOLT ASSY STEP 5/8X7 W/DBN	[M16x178]

GENERAL NOTES:

1. LEG PART NUMBER IS STAMPED AT THE BOTTOM OF EACH LEG AND MUST BE LOCATED AT THE BOTTOM OF THE SECTION FOR PROPER ASSEMBLY.
2. STEP BOLTS ARE PROVIDED ON ONE LEG ONLY.
3. THIS IS A BASE SECTION. SEE THE TOWER ASSEMBLY FOR ANCHOR BOLTS. A NUT LOCKING DEVICE IS SUPPLIED FOR THE ANCHOR BOLTS.
4. DRAWING IS N.T.S. AND IS FOR ASSEMBLY PURPOSES ONLY.
5. NOMINAL METRIC EQUIVALENTS ARE GIVEN FOR REFERENCE ONLY AND SHALL NOT BE SUBSTITUTED FOR THE DESCRIBED SIZES UNLESS OTHERWISE APPROVED BY ROHN PRODUCTS.



VIEW A-A



SECTION B-B

FLANGE	OFFSET	BEVEL	FLANGE PLATE (P/N)	SPREAD
TOP	N/A	N/A	7" X 7" X 1" (P/N: R-7F)	12'-7 5/8" [3851mm]
BOTTOM	N/A	3 1/3° STD.	7" X 7" X 1" (P/N: R-7F)	14'-7 5/8" [4461mm]

FILE NO.

Standard-SSV

REVISIONS

REV.	DESCRIPTION	DWN	CHK	APP
1	REDRAWN TO NEW AUTOCAD FORMAT. DATE: Aug/31/2005	KB2	JTB	AAS
2	VL704/SXL WAS VL704/S REPLACED FOR REV. G SPECS DATE: Oct/04/2006	JDA	KTL	H.A
3	REDRAWN TO STANDARDS DATE: Sep/10/2010	LGC	M.F	HA

DWG REFERENCE



6718 WEST PLANK ROAD
PEORIA, IL 61604
TOLL FREE 800-727-ROHN

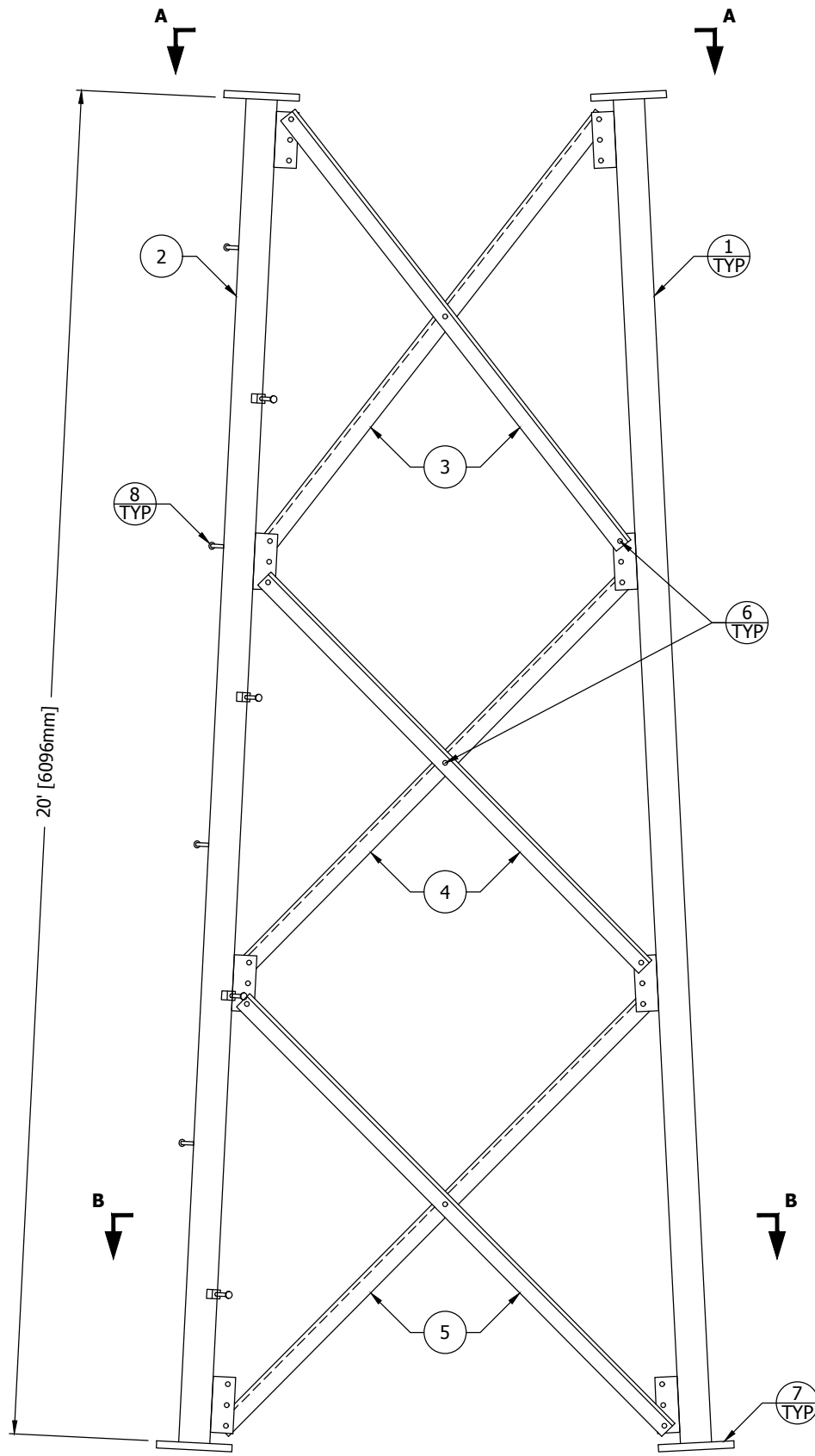
THIS DRAWING IS THE PROPERTY OF ROHN. IT IS NOT TO BE REPRODUCED, COPIED OR TRACED IN WHOLE OR IN PART WITHOUT OUR WRITTEN CONSENT.

SECTION ASSEMBLY
DETAILS FOR SSV 11N337 (BASE)

DWN: M.F	CHK'D: KTL	DATE: Apr/11/2005
----------	------------	-------------------

ENG'R: H.A	
------------	--

DRAWING NO: A050204	REV: 3
---------------------	--------

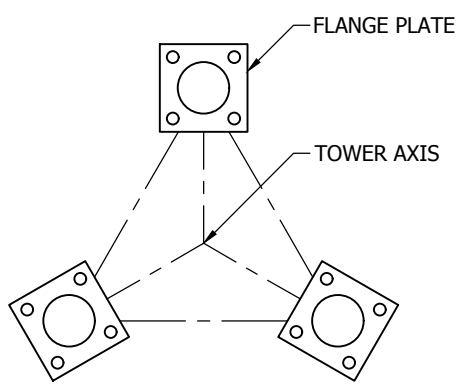


ELEVATION VIEW

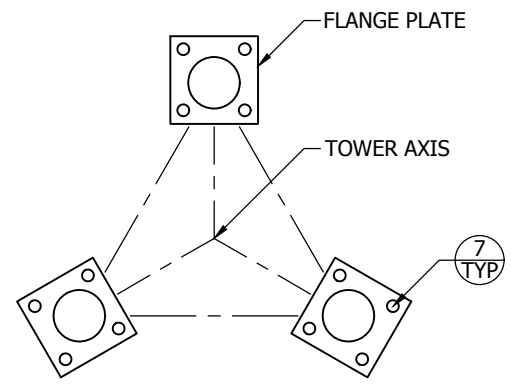
FLANGE	OFFSET	BEVEL	FLANGE PLATE (P/N)	SPREAD
TOP	N/A	N/A	6" X 6" X 3/4" (P/N: 6C)	10'-7 1/4" [3232mm]
BOTTOM	1/4"	N/A	7" X 7" X 1" (P/N: 7A)	12'-7 5/8" [3851mm]

SECTION ASSEMBLY P/N: 10N27				
BILL OF MATERIAL				
ITEM	PART NO.	QTY	DESCRIPTION	
1	VL162	2	LEG SSV 9-11N 3EH 20' 6 7 OFF	[PIPE 76mmEH]
2	VL162S	1	LEG SSV 9-11N 3EH 20' 6 7 OFF	[PIPE 76mmEH]
3	W101	6	L2.00X2.00X.19X147.44 10N D	[L 51x51x5]
4	W102	6	L2.00X2.00X.19X154.31 10N D	[L 51x51x5]
5	W103	6	L2.00X2.00X.19X160.19 10N D	[L 51x51x5]
6	210017GA	45	BOLT ASSY 1/2X1-1/4 A325 HDG	[M13x32]
7	210063GA	12	BOLT ASSY 7/8X3-1/2 A325 HDG	[M22x89]
8	5/8STEP	16	BOLT ASSY STEP 5/8X7 W/DBN	[M16x178]

- GENERAL NOTES:**
- LEG PART NUMBER IS STAMPED AT THE BOTTOM OF EACH LEG AND MUST BE LOCATED AT THE BOTTOM OF THE SECTION FOR PROPER ASSEMBLY.
 - STEP BOLTS ARE PROVIDED ON ONE LEG ONLY.
 - FLANGE BOLTS ARE FOR FLANGE PLATES AT THE BOTTOM OF THE SECTION.
 - DRAWING IS N.T.S. AND IS FOR ASSEMBLY PURPOSES ONLY.
 - NOMINAL METRIC EQUIVALENTS ARE GIVEN FOR REFERENCE ONLY AND SHALL NOT BE SUBSTITUTED FOR THE DESCRIBED SIZES UNLESS OTHERWISE APPROVED BY ROHN PRODUCTS.



VIEW A-A



VIEW B-B

FILE NO.				
REVISIONS				
REV	DESCRIPTION	DWN	CHK	APP
2	REDRAWN	JHY	KTL	DWG
DATE: 09/27/2016				

ROHN[®]
PRODUCTS, LLC
PO BOX 5999
PEORIA, IL 61601-5999
TOLL FREE 800-727-ROHN

THIS DRAWING IS THE PROPERTY OF ROHN. IT IS NOT TO BE REPRODUCED, COPIED OR TRACED IN WHOLE OR IN PART WITHOUT OUR WRITTEN CONSENT.

SECTION ASSEMBLY
DETAILS FOR SSV 10N27

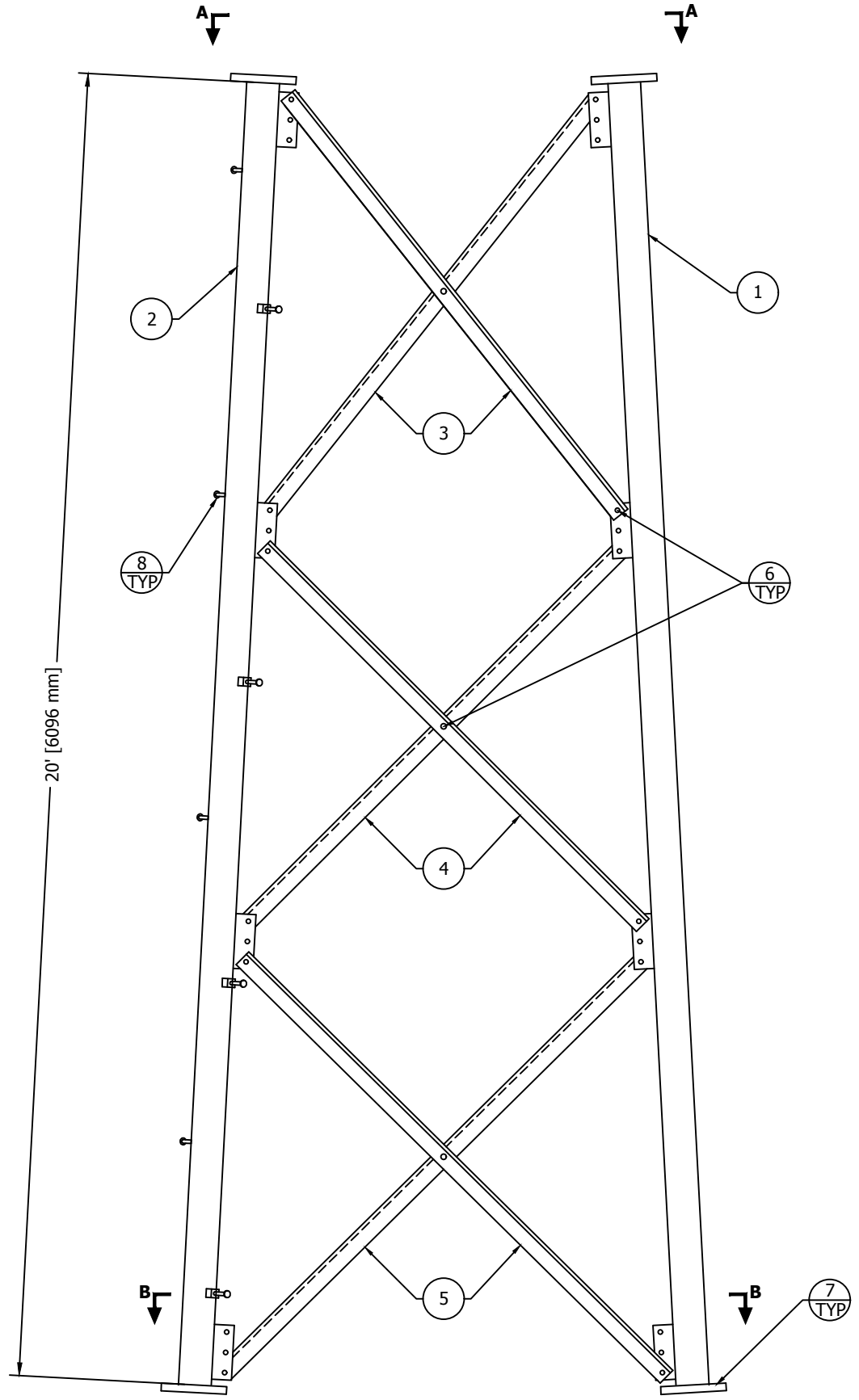
DWN: AED	CHK'D: HRK	DATE: 12/01/1978
ENG'R: TS	SHEET #: 1 OF 1	
PRJ. ENG'R:	PRJ. MANG'R:	

DRAWING NO: A780415	REV: 2
---------------------	--------

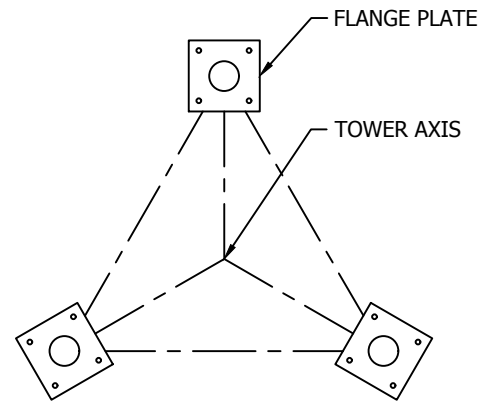
SECTION ASSEMBLY P/N: 9N8

BILL OF MATERIAL				
ITEM	PART NO.	QTY	DESCRIPTION	
1	VL351	2	LEG SSV 9-11N 2.5EH 20' 5 60F	[PIPE 64mm EH]
2	VL351S	1	LEG SSV 9-11N 2.5EH 20' 5 60F	[PIPE 64mm EH]
3	W91	6	BRACE DS SS9T L1.75X.19X10.63'	[L 44x44x5]
4	W92	6	BRACE DS SS9T L1.75X.19X11.17'	[L 44x44x5]
5	W93	6	BRACE DS SS9T L1.75X.19X11.61'	[L 44x44x5]
6	210017GA	45	BOLT ASSY 1/2 X 1-1/4 HSB A325	[M13x32]
7	210050GA	12	BOLT ASSY 3/4 X 2-3/4 HSB A325	[M19x70]
8	5/8STEP	16	BOLT ASSY STEP 5/8X7 W/DBN	[M16x178]

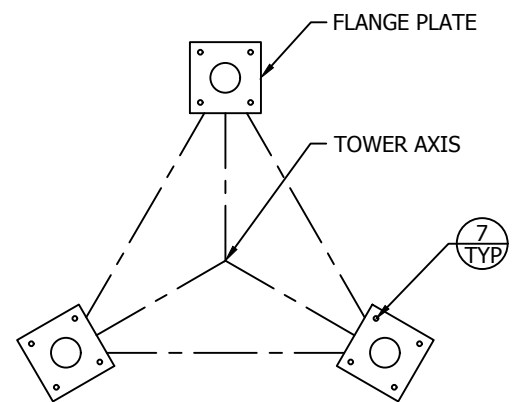
- GENERAL NOTES:**
- LEG PART NUMBER IS STAMPED AT THE BOTTOM OF EACH LEG AND MUST BE LOCATED AT THE BOTTOM OF THE SECTION FOR PROPER ASSEMBLY.
 - STEP BOLTS ARE PROVIDED ON ONE LEG ONLY.
 - FLANGE BOLTS ARE FOR FLANGE PLATES AT THE BOTTOM OF THE SECTION.
 - DRAWING IS N.T.S. AND IS FOR ASSEMBLY PURPOSES ONLY.
 - NOMINAL METRIC EQUIVALENTS ARE GIVEN FOR REFERENCE ONLY AND SHALL NOT BE SUBSTITUTED FOR THE DESCRIBED SIZES UNLESS OTHERWISE APPROVED BY ROHN PRODUCTS.



ELEVATION VIEW



VIEW A-A



SECTION B-B

FLANGE	OFFSET	BEVEL	FLANGE PLATE (P/N)	SPREAD
TOP	N/A	N/A	5" X 5" X 3/4" (P/N: R-5C)	8'-6 3/4" [2610mm]
BOTTOM	1/4" [6mm]	N/A	6" X 6" X 3/4" (P/N: R-6A)	10'-7 1/4" [3232mm]

FILE NO. Standard-SSV

REVISIONS				
REV.	DESCRIPTION	DWN	CHK	APP
2	UPDATE TO STANDARDS DATE: May/24/2011	JC	KTL	HA

DWG REFERENCE



6718 WEST PLANK ROAD
PEORIA, IL 61604
TOLL FREE 800-727-ROHN

THIS DRAWING IS THE PROPERTY OF ROHN. IT IS NOT TO BE REPRODUCED, COPIED OR TRACED IN WHOLE OR IN PART WITHOUT OUR WRITTEN CONSENT.

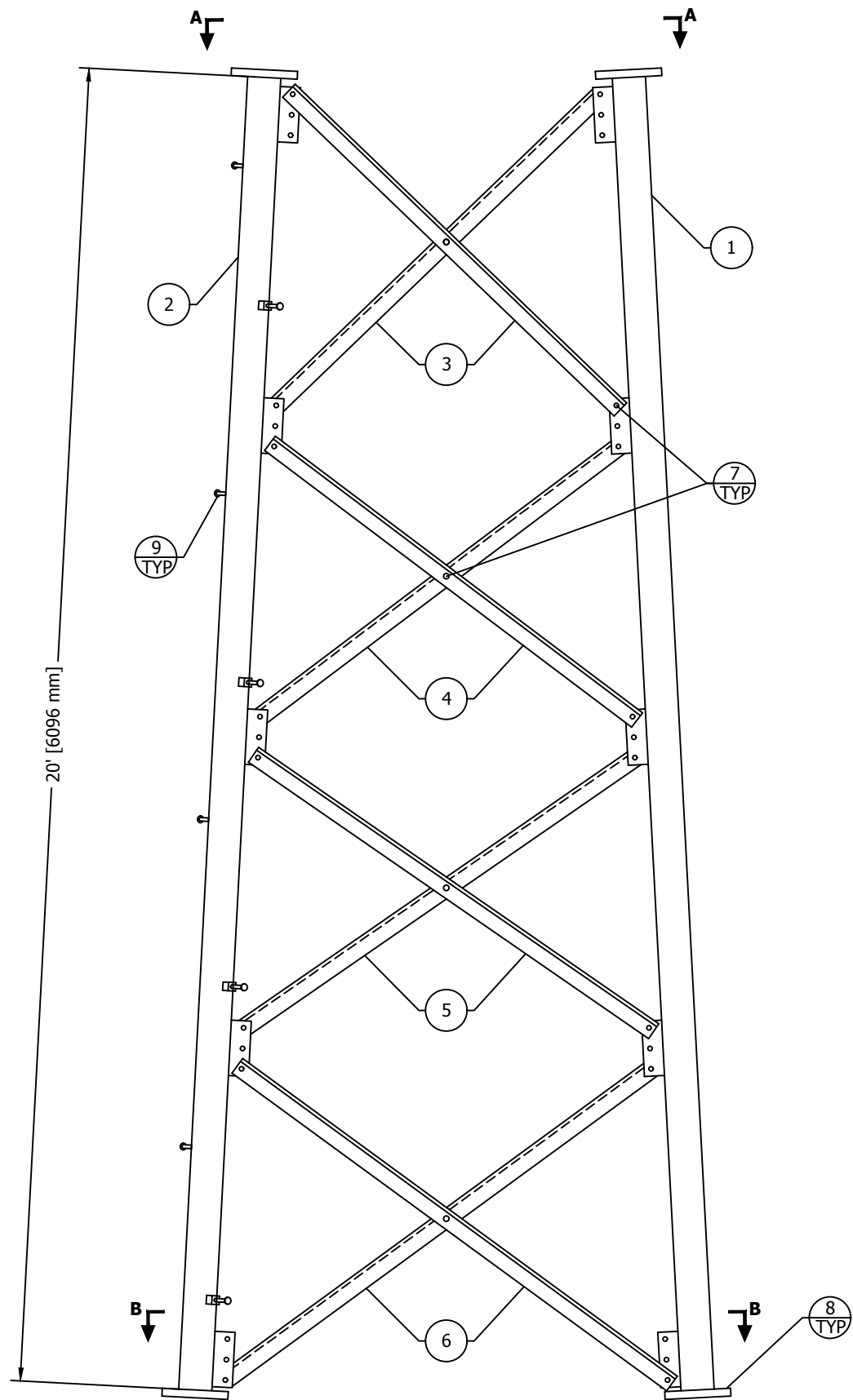
**SECTION ASSEMBLY
DETAILS FOR SSV 9N8**

DWN: AED	CHK'D: WDU	DATE: Nov/15/1978
ENG'R: T.S		

DRAWING NO: A780327	REV: 2
-------------------------------	------------------

May/24/2011 2:11:34 PM

1/revision



ELEVATION VIEW

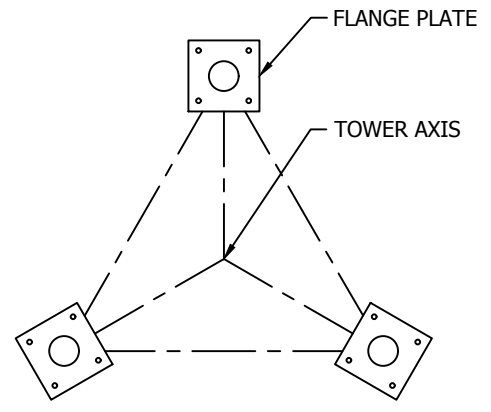
SECTION ASSEMBLY P/N: 8N8

BILL OF MATERIAL

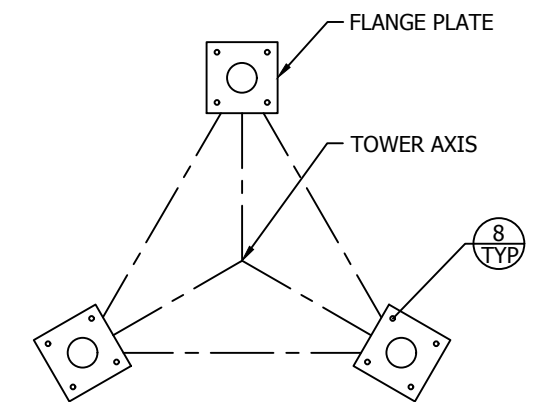
ITEM	PART NO.	QTY	DESCRIPTION	
1	VL349	2	LEG SSV 8N 2.5STD 20' 5 5	[PIPE 64mm STD]
2	VL349S	1	LEG SSV 8N 2.5STD 20' 5 5	[PIPE 64mm STD]
3	W81	6	BRACE DS SS8T L1.5X.19X7.95'	[L 38x38x5]
4	W82	6	BRACE DS SS8T L1.5X.19X8.36'	[L 38x38x5]
5	W83	6	BRACE DS SS8T L1.5X.19X8.79'	[L 38x38x5]
6	W84	6	BRACE DS SS8T L1.5X.19X9.10'	[L 38x38x5]
7	210017GA	60	BOLT ASSY 1/2 X 1-1/4 HSB A325	[M13x32]
8	210033GA	12	BOLT ASSY 5/8 X 2-1/2 HSB A325	[M16x64]
9	5/8STEP	16	BOLT ASSY STEP 5/8X7 W/DBN	[M16x178]

GENERAL NOTES:

1. LEG PART NUMBER IS STAMPED AT THE BOTTOM OF EACH LEG AND MUST BE LOCATED AT THE BOTTOM OF THE SECTION FOR PROPER ASSEMBLY.
2. STEP BOLTS ARE PROVIDED ON ONE LEG ONLY.
3. FLANGE BOLTS ARE FOR FLANGE PLATES AT THE BOTTOM OF THE SECTION.
4. DRAWING IS N.T.S. AND IS FOR ASSEMBLY PURPOSES ONLY.
5. NOMINAL METRIC EQUIVALENTS ARE GIVEN FOR REFERENCE ONLY AND SHALL NOT BE SUBSTITUTED FOR THE DESCRIBED SIZES UNLESS OTHERWISE APPROVED BY ROHN PRODUCTS.



VIEW A-A



SECTION B-B

FLANGE	OFFSET	BEVEL	FLANGE PLATE (P/N)	SPREAD
TOP	N/A	N/A	5" X 5" X 3/4" (P/N: R-5C)	6'-6 3/4" [2000mm]
BOTTOM	N/A	N/A	5" X 5" X 3/4" (P/N: R-5C)	8'-6 3/4" [2610mm]

FILE NO. Standard-SSV

REVISIONS				
REV.	DESCRIPTION	DWN	CHK	APP
2	UPDATE TO STANDARDS DATE: May/24/2011	JC	KTL	HA

DWG REFERENCE



6718 WEST PLANK ROAD
PEORIA, IL 61604
TOLL FREE 800-727-ROHN

THIS DRAWING IS THE PROPERTY OF ROHN. IT IS NOT TO BE REPRODUCED, COPIED OR TRACED IN WHOLE OR IN PART WITHOUT OUR WRITTEN CONSENT.

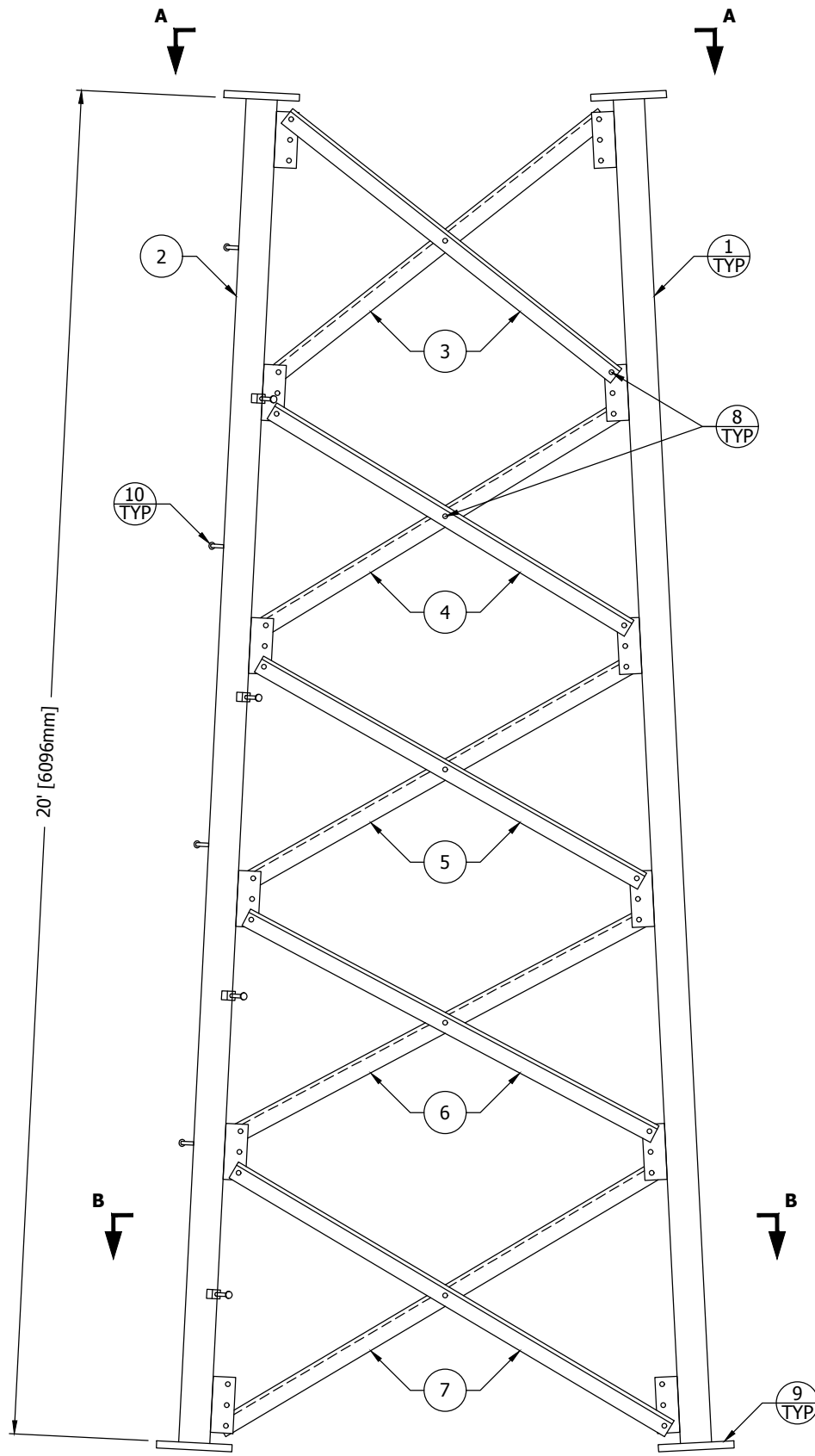
**SECTION ASSEMBLY
DETAILS FOR SSV 8N8**

DWN: AED	CHK'D: RNA	DATE: Oct/28/1978
ENG'R: T.S		

DRAWING NO: A780261	REV: 2
------------------------	-----------

May/24/2011 2:01:00 PM

1/revision



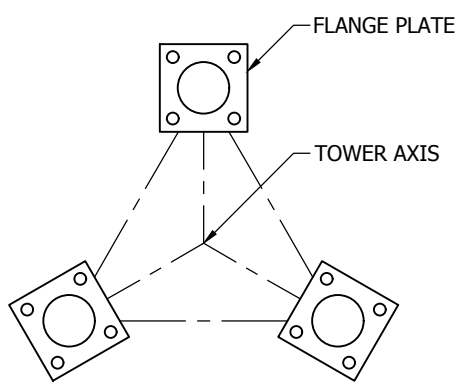
ELEVATION VIEW

FLANGE	OFFSET	BEVEL	FLANGE PLATE (P/N)	SPREAD
TOP	N/A	N/A	5" X 5" X 3/4" (P/N: 5A)	4'-6 1/4" [1378mm]
BOTTOM	1/4"	N/A	5" X 5" X 3/4" (P/N: 5B)	6'-6 3/4" [2000mm]

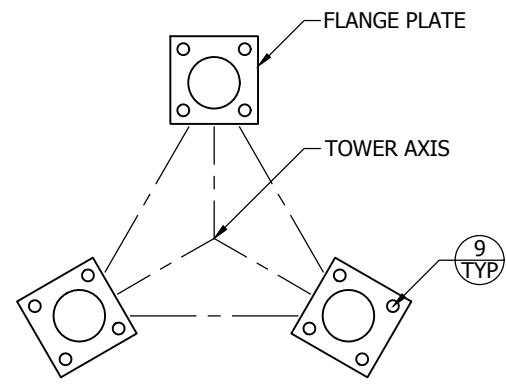
SECTION ASSEMBLY P/N: 7N12				
BILL OF MATERIAL				
ITEM	PART NO.	QTY	DESCRIPTION	
1	VL348	2	LEG SSV 6-7N 2STD 20' 5 5OFF	[PIPE 51mm STD]
2	VL348S	1	LEG SSV 6-7N 2STD 20' 5 5OFF	[PIPE 51mm STD]
3	W71	6	L1.50X1.50X.19X68.56 7N D	[L 38x38x5]
4	W72	6	L1.50X1.50X.19X72.38 7N D	[L 38x38x5]
5	W73	6	L1.50X1.50X.19X76.25 7N D	[L 38x38x5]
6	W74	6	L1.50X1.50X.19X80.25 7N D	[L 38x38x5]
7	W75	6	L1.50X1.50X.19X83.00 7N D	[L 38x38x5]
8	210017GA	75	BOLT ASSY 1/2X1-1/4 A325 HDG	[M13x32]
9	210033GA	12	BOLT ASSY 5/8X2-1/2 A325 HDG	[M16x64]
10	5/8STEP	16	BOLT ASSY STEP 5/8X7 W/DBN	[M16x178]

GENERAL NOTES:

- LEG PART NUMBER IS STAMPED AT THE BOTTOM OF EACH LEG AND MUST BE LOCATED AT THE BOTTOM OF THE SECTION FOR PROPER ASSEMBLY.
- STEP BOLTS ARE PROVIDED ON ONE LEG ONLY.
- FLANGE BOLTS ARE FOR FLANGE PLATES AT THE BOTTOM OF THE SECTION.
- DRAWING IS N.T.S. AND IS FOR ASSEMBLY PURPOSES ONLY.
- NOMINAL METRIC EQUIVALENTS ARE GIVEN FOR REFERENCE ONLY AND SHALL NOT BE SUBSTITUTED FOR THE DESCRIBED SIZES UNLESS OTHERWISE APPROVED BY ROHN PRODUCTS.



VIEW A-A



VIEW B-B

FILE NO.				
REVISIONS				
REV	DESCRIPTION	DWN	CHK	APP
1	REDRAWN	JHY	KTL	DWG
DATE: 09/27/2016				

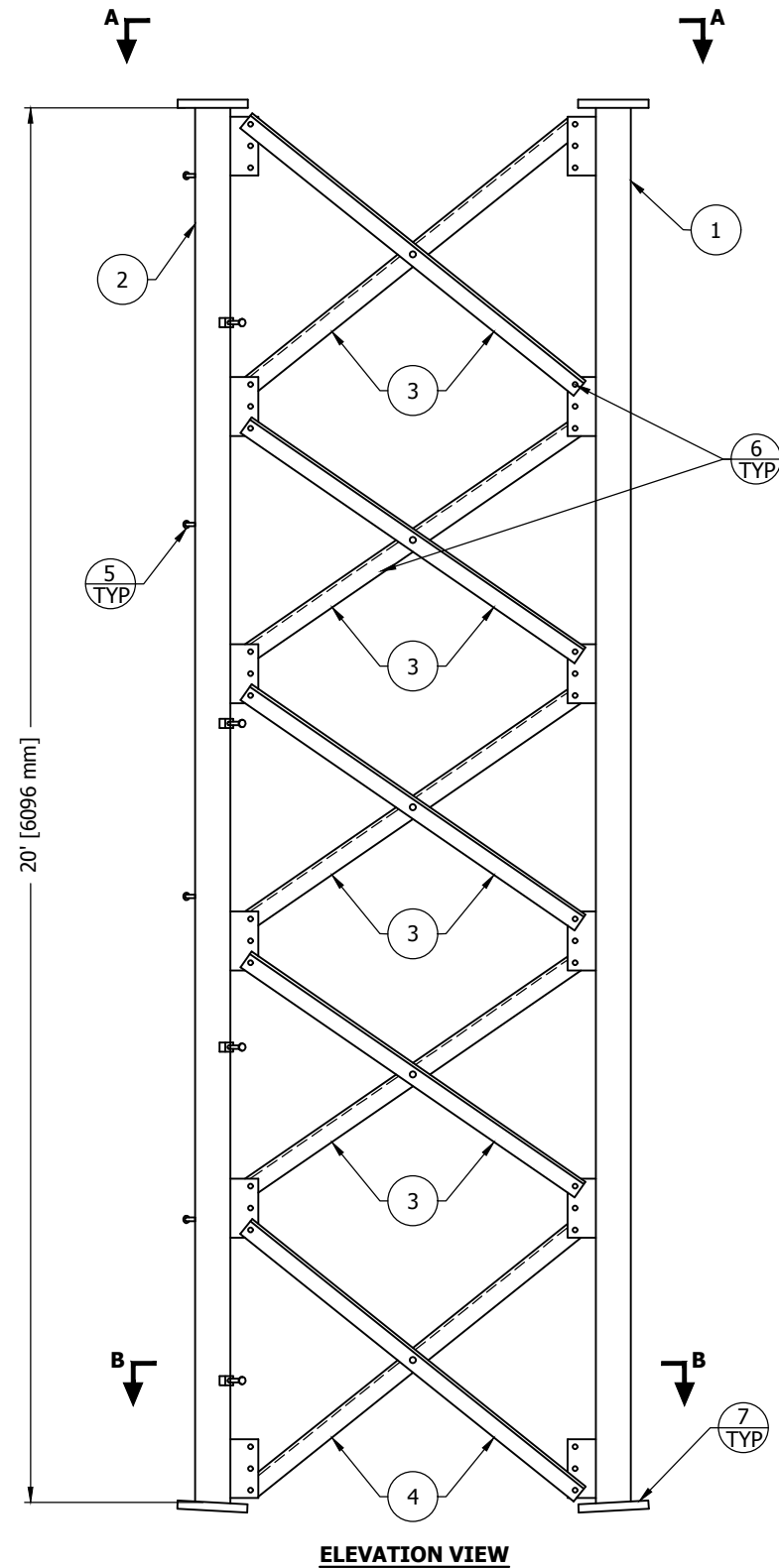


PO BOX 5999
PEORIA, IL 61601-5999
TOLL FREE 800-727-ROHN

THIS DRAWING IS THE PROPERTY OF ROHN. IT IS NOT TO BE REPRODUCED, COPIED OR TRACED IN WHOLE OR IN PART WITHOUT OUR WRITTEN CONSENT.

**SECTION ASSEMBLY
DETAILS FOR SSV 7N12**

DWN:	AED	CHK'D:	KTL	DATE:	09/10/1978
ENG'R:	TS	SHEET #:		1 OF 1	
PRJ. ENG'R:		PRJ. MANG'R:			
DRAWING NO:	A780153			REV:	1



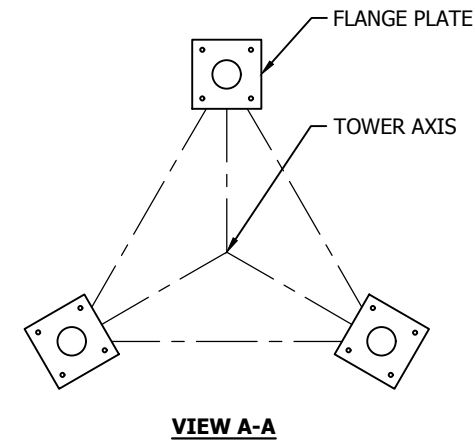
ELEVATION VIEW

FLANGE	OFFSET	BEVEL	FLANGE PLATE (P/N)	SPREAD
TOP	N/A	N/A	5" X 5" X 3/4" (P/N: 5A)	4'-6 1/4" [1378mm]
BOTTOM	N/A	3 1/3° REV.	5" X 5" X 3/4" (P/N: 5A)	4'-6 1/4" [1378mm]

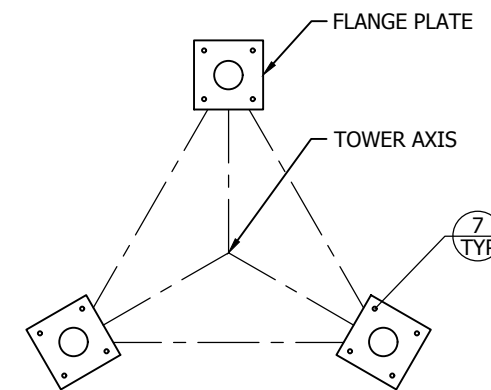
SECTION ASSEMBLY P/N: 6N35				
BILL OF MATERIAL				
ITEM	PART NO.	QTY	DESCRIPTION	
1	VL365	2	LEG SSV 6-7N 2STD 20' 5 5BEV	[PIPE 51mm STD]
2	VL365S	1	LEG SSV 6-7N 2STD 20' 5 5BEV	[PIPE 51mm STD]
3	6WB	24	L1.50X1.50X.19X66.81 6N D	[L 38x38x5]
4	6WC	6	L1.50X1.50X.19X65.19 6N D	[L 38x38x5]
5	5/8STEP	16	BOLT ASSY STEP 5/8X7 W/DBN	[M16x178]
6	210017GA	75	BOLT ASSY 1/2X1-1/4 A325 HDG	[M13x32]
7	210033GA	12	BOLT ASSY 5/8X2-1/2 A325 HDG	[M16x64]

GENERAL NOTES:

1. LEG PART NUMBER IS STAMPED AT THE BOTTOM OF EACH LEG AND MUST BE LOCATED AT THE BOTTOM OF THE SECTION FOR PROPER ASSEMBLY.
2. STEP BOLTS ARE PROVIDED ON ONE LEG ONLY.
3. FLANGE BOLTS ARE FOR FLANGE PLATES AT THE BOTTOM OF THE SECTION.
4. DRAWING IS N.T.S. AND IS FOR ASSEMBLY PURPOSES ONLY.
5. NOMINAL METRIC EQUIVALENTS ARE GIVEN FOR REFERENCE ONLY AND SHALL NOT BE SUBSTITUTED FOR THE DESCRIBED SIZES UNLESS OTHERWISE APPROVED BY ROHN PRODUCTS.



VIEW A-A



SECTION B-B

FILE NO.

REVISIONS				
REV	DESCRIPTION	DWN	CHK	APP
2	REDRAWN IN AUTOCAD DATE: 4/7/16	CHW	KTL	HA



PO BOX 5999
PEORIA, IL 61601-5999
TOLL FREE 800-727-ROHN

THIS DRAWING IS THE PROPERTY OF ROHN. IT IS NOT TO BE REPRODUCED, COPIED OR TRACED IN WHOLE OR IN PART WITHOUT OUR WRITTEN CONSENT.

**SECTION ASSEMBLY
DETAILS FOR 6N35**

DWN: AED	CHK'D: WDU	DATE: 10/17/1978
ENG'R: TS	SHEET #: 1 OF 1	
PRJ. ENG'R:	PRJ. MANG'R:	

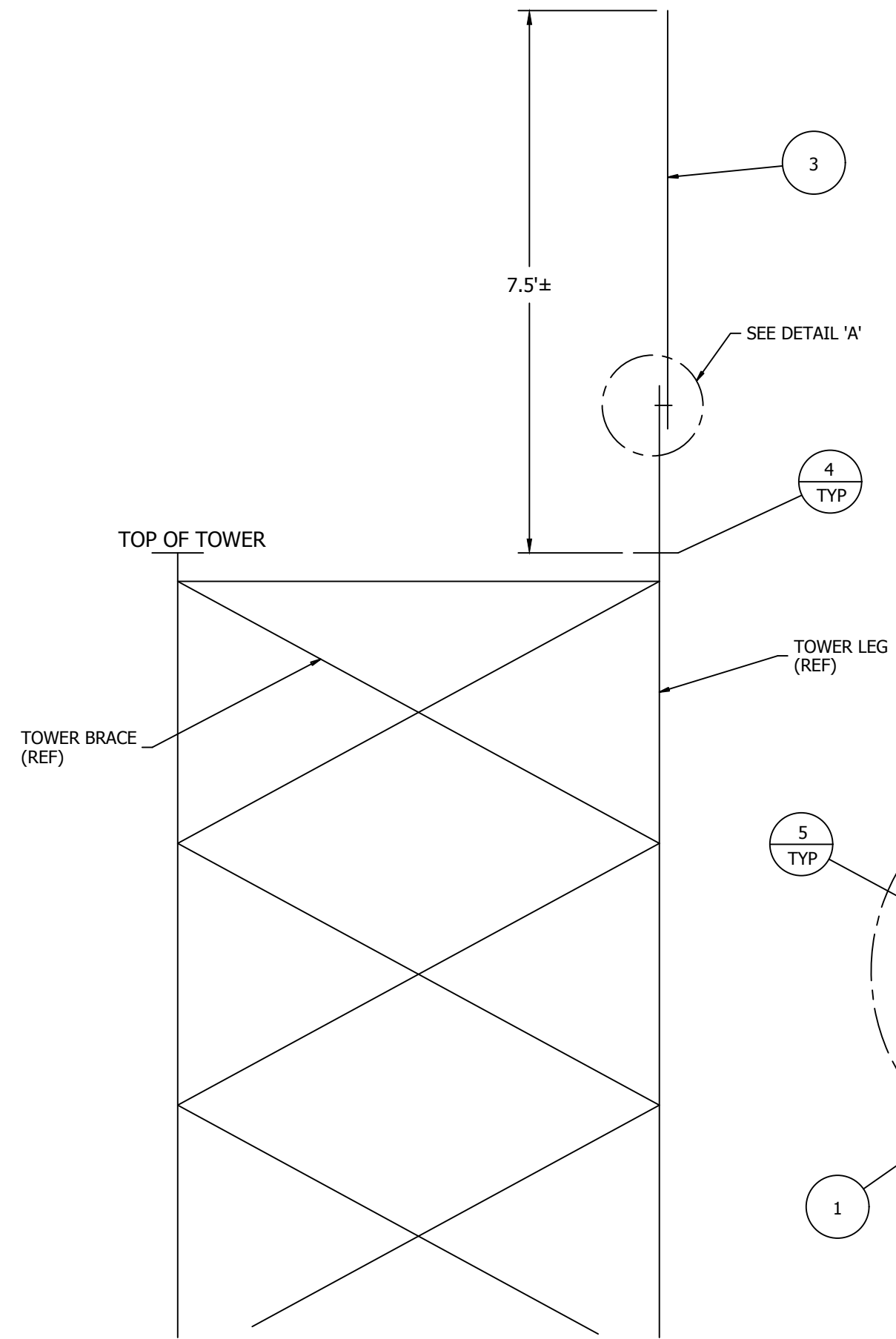
DRAWING NO: **A780233** REV: **2**

REVISIONS				
REV.	DESCRIPTION	DWN	CHK	APP
1	REVISED STUB P/N'S	M.F	KTL	HA
DATE: Nov/29/2005				

BILL OF MATERIAL

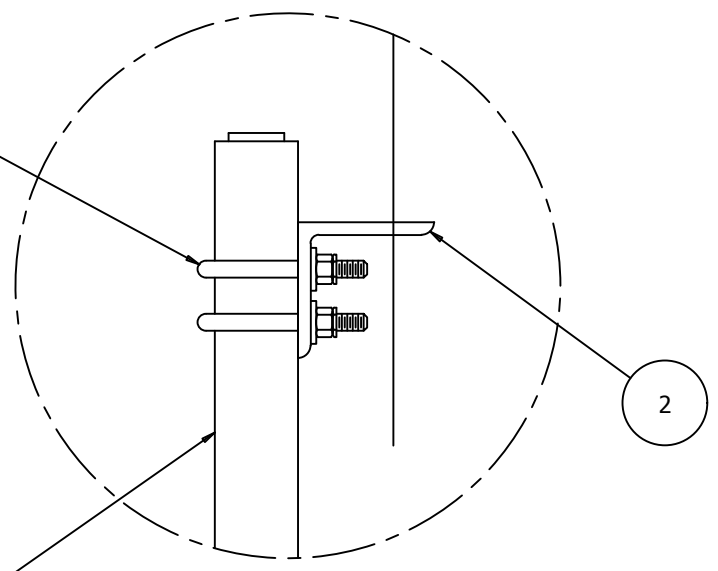
ITEM	QUAN.	PART NO.	DESCRIPTION	DWG. NO.
1	1	M25H5	STUB MOUNT P 2.5 EH X 2.5	★ B050346
2	1	VY1653	ANGLE ADAPTER CLIP (L4 X 4 X .38")	★ B800104
3	1	LRCL	COPPER CLAD LIGHTNING ROD (.63 D X 5')	N/A
4	4	210033GA	FLANGE BOLT ASS'Y (.63 X 2.50")	C770404
5	2	JR84AW	U-BOLT ASS'Y (.50 X 3.00")	B651028
1	1	M25H6	STUB MOUNT P 2.5 EH X 2.5'	★ B050346
2	1	VY1653	ANGLE ADAPTER CLIP (L4 X 4 X .38")	★ B800104
3	1	LRCL	COPPER CLAD LIGHTNING ROD (.63 D X 5')	N/A
4	4	210050GA	FLANGE BOLT ASS'Y (.75 X 2.75")	C770404
5	2	JR84AW	U-BOLT ASS'Y (.50 X 3.00")	B651028
1	1	M25H7	STUB MOUNT P 2.5 EH X 2.5'	★ B050346
2	1	VY1653	ANGLE ADAPTER CLIP (L4 X 4 X .38")	★ B800104
3	1	LRCL	COPPER CLAD LIGHTNING ROD (.63 D X 5')	N/A
4	4	210063GA	FLANGE BOLT ASS'Y (.88 X 3.50")	C770404
5	2	JR84AW	U-BOLT ASS'Y (.50 X 3.00")	B651028

- ASS'Y P/N: KH6747A
FOR 5" FLANGE PLATE
- ASS'Y P/N: KH6748A
FOR 6" FLANGE PLATE
- ASS'Y P/N: KH6749A
FOR 7" FLANGE PLATE



GENERAL NOTES

1. MOUNT P/N VY1653 AS NEAR TO THE TOP OF STUB MOUNT AS IS NECESSARY.
2. ANCO NUTS MAY BE SUBSTITUTED AS NECESSARY BY ADDING "AN" TO THE END OF ASS'Y P/N.
3. DOWNLEAD CLAMPS MAY BE ATTACHED TO THE LIGHTNING ROD (LRCL) AS NEEDED.
4. "★" - INDICATES FAB DRAWINGS FOR SHOP USE ONLY.



DETAIL 'A'

DWG REFERENCE



6718 WEST PLANK ROAD
PEORIA, IL 61604
TOLL FREE 800-727-ROHN

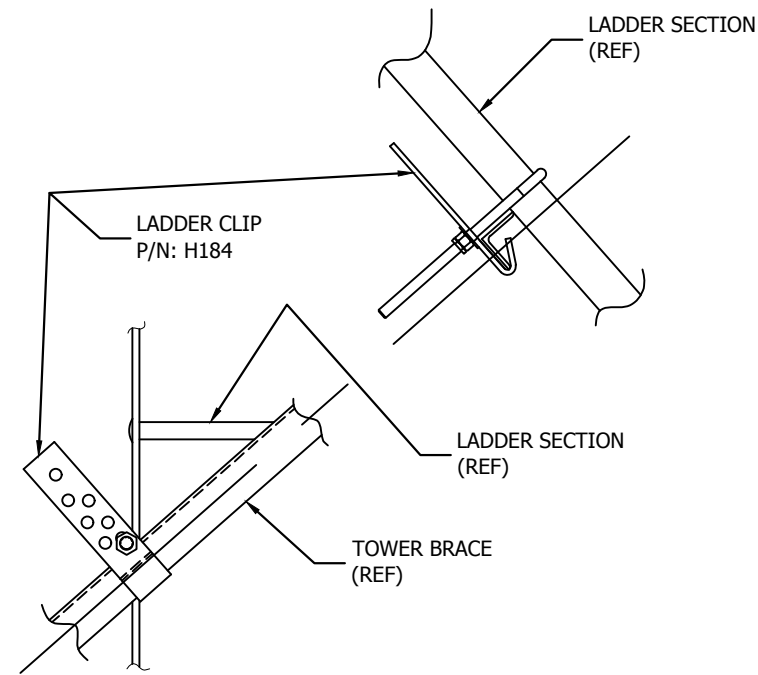
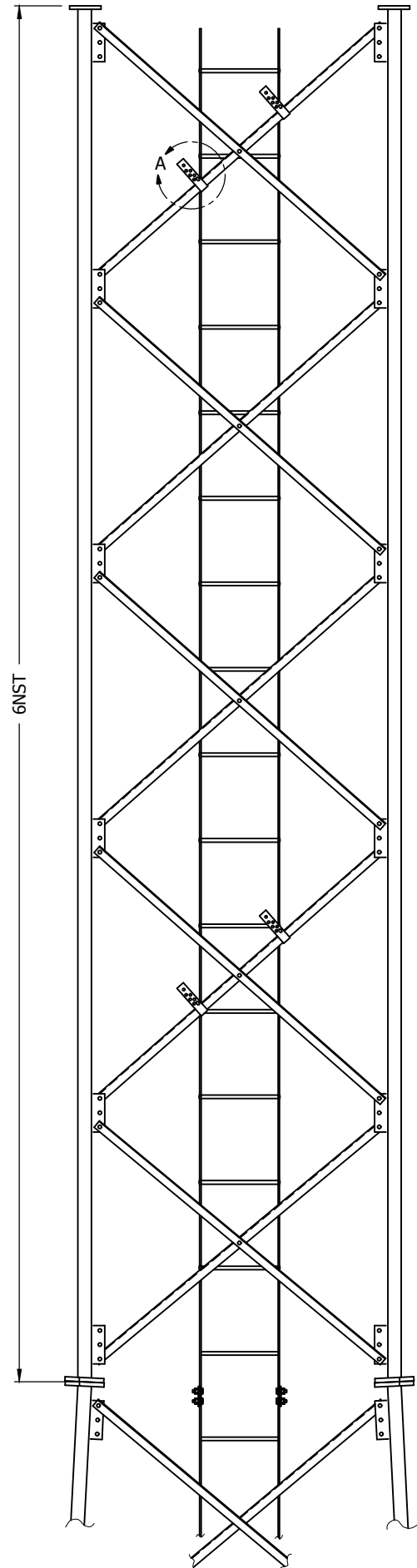
THIS DRAWING IS THE PROPERTY OF ROHN. IT IS NOT TO BE REPRODUCED, COPIED OR TRACED IN WHOLE OR IN PART WITHOUT OUR WRITTEN CONSENT.

**MOUNTING
7.5' LIGHTNING ROD EXT. ASSY.**

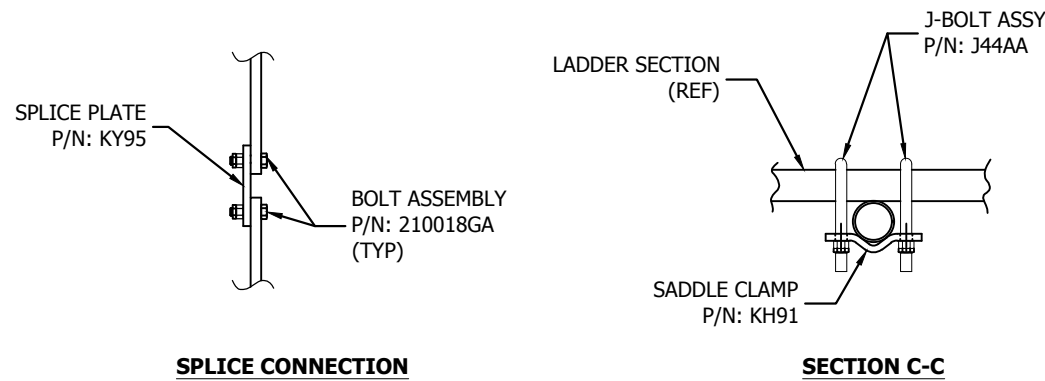
DWN: L_K	CHK'D: A_S	DATE: Apr/20/1999
ENG'R: TWS		
DRAWING NO: C990952	REV: 1	

Sep/15/2006 2:21:57 PM

I:\rection\

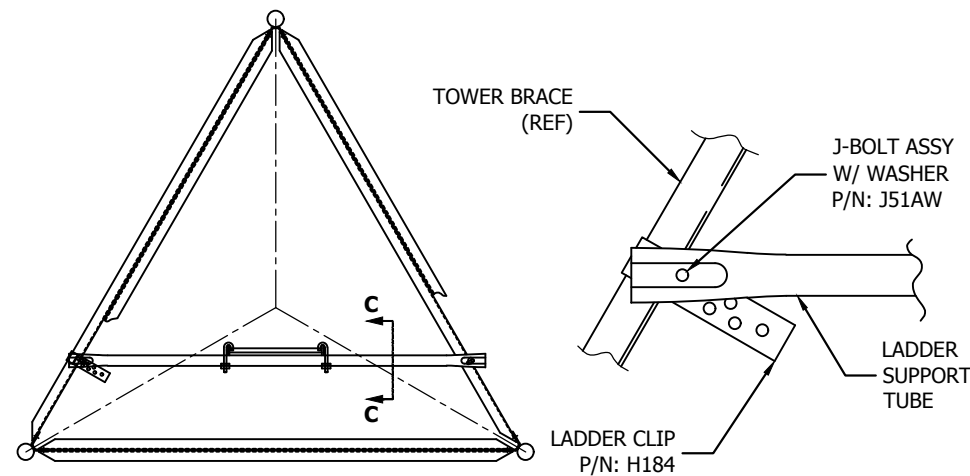


DETAIL A-A
LADDER CLIP DETAIL
ATTACH LADDER DIRECTLY TO
THE BRACES IN 6NST SECTION



SPLICE CONNECTION

SECTION C-C



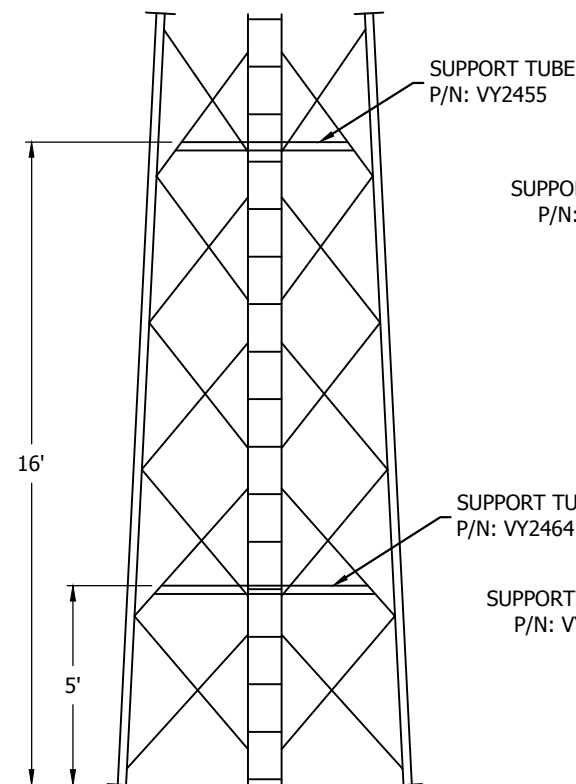
VIEW B-B
TYP. FOR 7N & 8N

**ASSY P/N VY3022A
FOR 6NST SECTIONS**

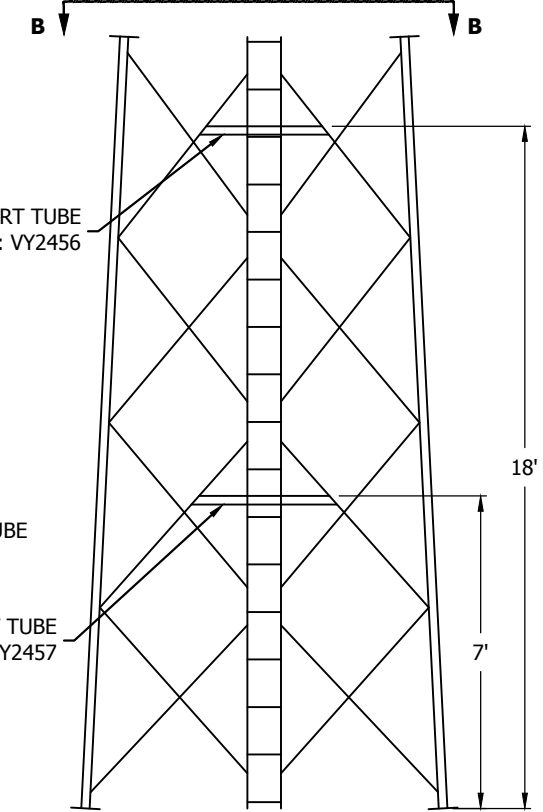
BILL OF MATERIAL			
QTY	P/N	DESCRIPTION	DWG
1	NL20	LADDER 20' STD 1.13' 15"OC	NL20
2	KY95	PLATE SPLICE .25X1.5X3.5"	KY95
4	H184	CLIP 1.5X.19X6.44" HDG	B991808
4	210018GA	BOLT ASSY 1/2X1-1/2 A325 HDG	N/A
4	J51AW	J-BOLT ASSY 3/8 X 5-3/8 W/WASH	B29-47

**ASSY P/N VY3021A
FOR 7N & 8N
SECTIONS**

BILL OF MATERIAL			
QTY	P/N	DESCRIPTION	DWG
2	NL20	LADDER 20' STD 1.13' 15"OC	NL20
4	KY95	PLATE SPLICE .25X1.5X3.5"	KY95
4	H184	CLIP 1.5X.19X6.44" HDG	B991808
8	210018GA	BOLT ASSY 1/2X1-1/2 A325 HDG	N/A
8	J51AW	J-BOLT ASSY 3/8 X 5-3/8 W/WASH	B29-47
8	KH91	SADDLE CLAMP NO. 25 WINCH HDG	B770214
16	J44AA	J-BOLT ASSY 3/8 X 3-11/16 HDG	B2942A
1	VY2455	TUBE LAD SUPP 1.5ODX11GAX4.73'	B810290
1	VY2464	TUBE LAD SUPP 1.5ODX11GAX5.06'	B810305
1	VY2456	TUBE LAD SUPP 1.5ODX11GAX5.48'	B810291
1	VY2457	TUBE LAD SUPP 1.5ODX11GAX5.81'	B810292



7N (5 BAYS)



8N (4 BAYS)

FILE NO.				
REVISIONS				
REV	DESCRIPTION	DWN	CHK	APP
3	REVISED TO LATEST FORMAT & REDUCED PAGE NUMBERS	JEC	MDF	HA
DATE: 6/8/2015				



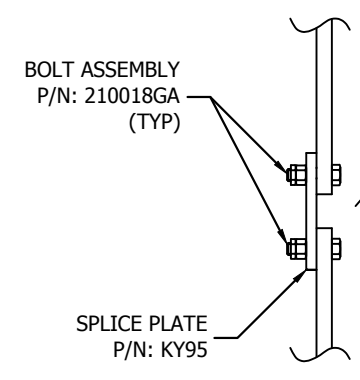
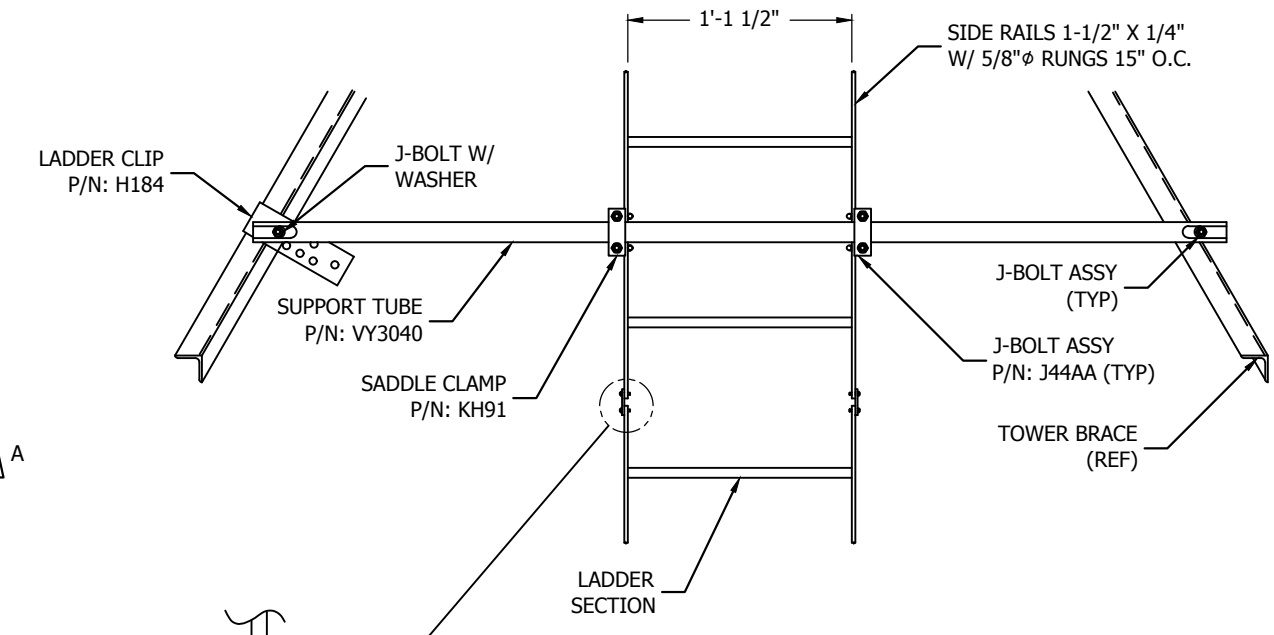
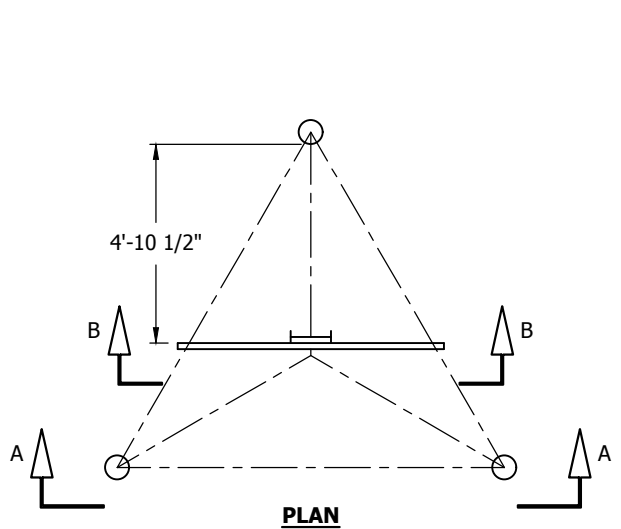
PO BOX 5999
PEORIA, IL 61601-5999
TOLL FREE 800-727-ROHN

THIS DRAWING IS THE PROPERTY OF ROHN. IT IS NOT TO BE REPRODUCED, COPIED OR TRACED IN WHOLE OR IN PART WITHOUT OUR WRITTEN CONSENT.

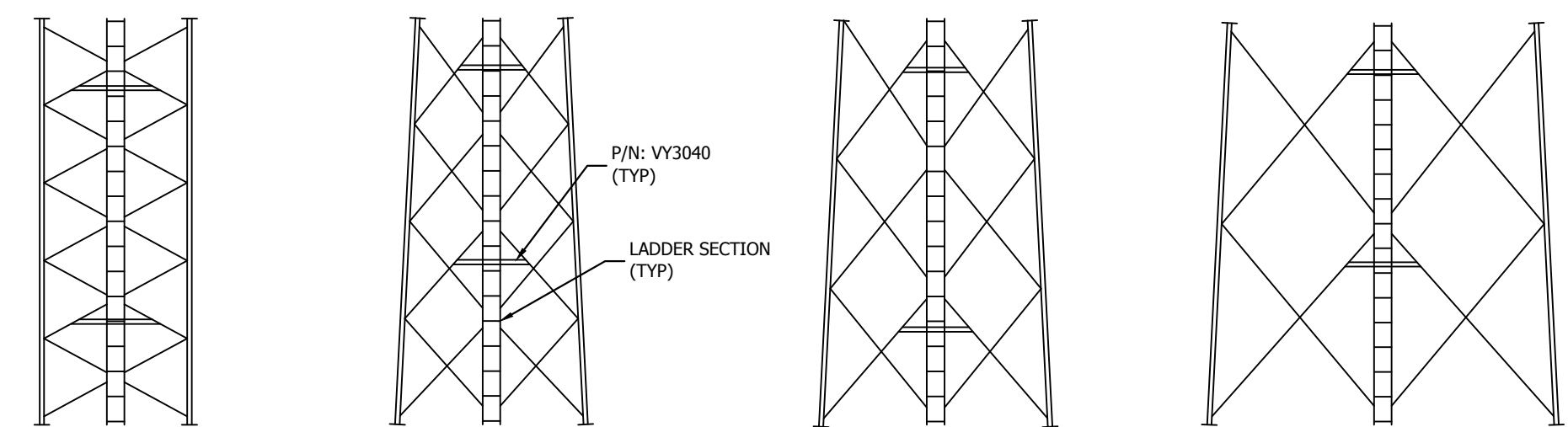
**LADDER ASSEMBLY
INSIDE CORNER LADDER ASSY (6NST-8N)**

DWN:	CHK'D:	DATE:
BF	KTL	02/05/2003
ENG'R:	SHEET #:	
HA	1 OF 1	
PRJ. ENG'R:	PRJ. MANG'R:	

DRAWING NO:	REV:
C030408	3



NOTE: AFTER INSTALLATION, BOTTOM OF LADDER MAY BE EMBEDDED IN CONCRETE FOR ADDED RIGIDITY.



7NST (5 BAYS)
(SECTION A-A)

8N (4 BAYS)
(SECTION A-A)

9N-11N (3 BAYS)
(SECTION A-A)

12N-16N (2 BAYS)
(SECTION A-A)

NOTE: SECTION A-A VIEWS ARE INCOMPLETE FOR CLARITY OF INSTALLATION

BILL OF MATERIAL

	QTY	P/N	DESCRIPTION	
ASSY P/N: VY3092A 10' SECTION FOR 1-1/2" - 2-1/2" BRACES	1	NL10	LADDER 10' STD 1.13' 15" OC	
	2	VY3040	TUBE LAD SUPP 1.50DX11GAX6.06'	
	2	H184	CLIP 1.5X.19X6.44" HDG	
	4	KH91	SADDLE CLAMP NO. 25 WINCH HDG	
	2	KY95	PLATE SPLICE .25X1.5X3.5"	
	10	J44AA	J-BOLT ASSY 3/8 X 3-11/16 HDG	
	2	J44AAW	J-BOLT ASSY 3/8X3-11/16 W/WASH	
	4	210018GA	BOLT ASSY 1/2X1-1/2 A325 HDG	
	ASSY P/N: VY3093A 20' SECTION FOR 1-1/2" - 2-1/2" BRACES	1	NL20	LADDER 20' STD 1.13' 15"OC
		2	VY3040	TUBE LAD SUPP 1.50DX11GAX6.06'
2		H184	CLIP 1.5X.19X6.44" HDG	
4		KH91	SADDLE CLAMP NO. 25 WINCH HDG	
2		KY95	PLATE SPLICE .25X1.5X3.5"	
10		J44AA	J-BOLT ASSY 3/8 X 3-11/16 HDG	
2		J44AAW	J-BOLT ASSY 3/8X3-11/16 W/WASH	
4		210018GA	BOLT ASSY 1/2X1-1/2 A325 HDG	
ASSY P/N: VY3094A 10' SECTION FOR 3" - 4" BRACES		1	NL10	LADDER 10' STD 1.13' 15" OC
		2	VY3040	TUBE LAD SUPP 1.50DX11GAX6.06'
	2	H184	CLIP 1.5X.19X6.44" HDG	
	4	KH91	SADDLE CLAMP NO. 25 WINCH HDG	
	2	KY95	PLATE SPLICE .25X1.5X3.5"	
	8	J44AA	J-BOLT ASSY 3/8 X 3-11/16 HDG	
	4	J51A	J-BOLT ASSY 3/8 X 5-3/8 HDG	
	4	210018GA	BOLT ASSY 1/2X1-1/2 A325 HDG	
	ASSY P/N: VY3095A 20' SECTION FOR 3" - 4" BRACES	1	NL20	LADDER 20' STD 1.13' 15"OC
		2	VY3040	TUBE LAD SUPP 1.50DX11GAX6.06'
2		H184	CLIP 1.5X.19X6.44" HDG	
4		KH91	SADDLE CLAMP NO. 25 WINCH HDG	
2		KY95	PLATE SPLICE .25X1.5X3.5"	
8		J44AA	J-BOLT ASSY 3/8 X 3-11/16 HDG	
4		J51A	J-BOLT ASSY 3/8 X 5-3/8 HDG	
4		210018GA	BOLT ASSY 1/2X1-1/2 A325 HDG	
ASSY P/N: VY4998A 20' SECTION FOR 5" BRACES		1	NL20	LADDER 20' STD 1.13' 15"OC
		2	VY3040	TUBE LAD SUPP 1.50DX11GAX6.06'
	2	H184	CLIP 1.5X.19X6.44" HDG	
	4	KH91	SADDLE CLAMP NO. 25 WINCH HDG	
	2	KY95	PLATE SPLICE .25X1.5X3.5"	
	8	J44AA	J-BOLT ASSY 3/8 X 3-11/16 HDG	
	4	J164A	J-BOLT ASSY 3/8 X 8" HDG	
	4	210018GA	BOLT ASSY 1/2X1-1/2 A325 HDG	

LADDER SUPPORT TUBE LOCATION CHART

20' SECTIONS		10' SECTIONS	
SECTION	ELEVATIONS ± (A,B)	SECTION	ELEVATIONS ± (A,B)
7NST	5'-0", 16'-0"	7NST	1'-6", 9'-0"
8N, 8NST	7'-0", 18'-0"	8N, 8NST	2'-6", 8'-0"
9N, 9NST	5'-0", 17'-6"	9N, 9NST	1'-0", 7'-6"
10N	5'-0", 17'-6"	10N	1'-0", 7'-6"
11N	5'-0", 17'-6"	11N	1'-0", 7'-6"
12N	7'-0", 17'-0"		
13N	7'-0", 17'-0"		
14N	7'-0", 17'-0"		
15N	7'-0", 17'-0"		
16N	7'-0", 17'-0"		

NOTE: AN ADDITIONAL 10 FEET OF LADDER IS PROVIDED WITH ALL TOWERS 200 FEET AND OVER. LADDER IS TO BE FIELD CUT TO PROPER LENGTH AFTER INSTALLATION. (ALL FIELD CUTTING MUST BE REPAIRED WITH COLD GALV. OR ZINC RICH PAINT).

FILE NO.				
REVISIONS				
REV	DESCRIPTION	DWN	CHK	APP
7	REVISED TO LATEST FORMAT	JEC	JDM	JDM
DATE: 6/3/2016				



PO BOX 5999
PEORIA, IL 61601-5999
TOLL FREE 800-727-ROHN

THIS DRAWING IS THE PROPERTY OF ROHN. IT IS NOT TO BE REPRODUCED, COPIED OR TRACED IN WHOLE OR IN PART WITHOUT OUR WRITTEN CONSENT.

STANDARD INSIDE CORNER MTD
(7NST-16N)

DWN:	CHK'D:	DATE:
AJG	GPW	01/19/1983
ENG'R:	SHEET #:	
TWS	1 OF 1	
PRJ. ENG'R:	PRJ. MANG'R:	
DRAWING NO:	REV:	
C821692	7	

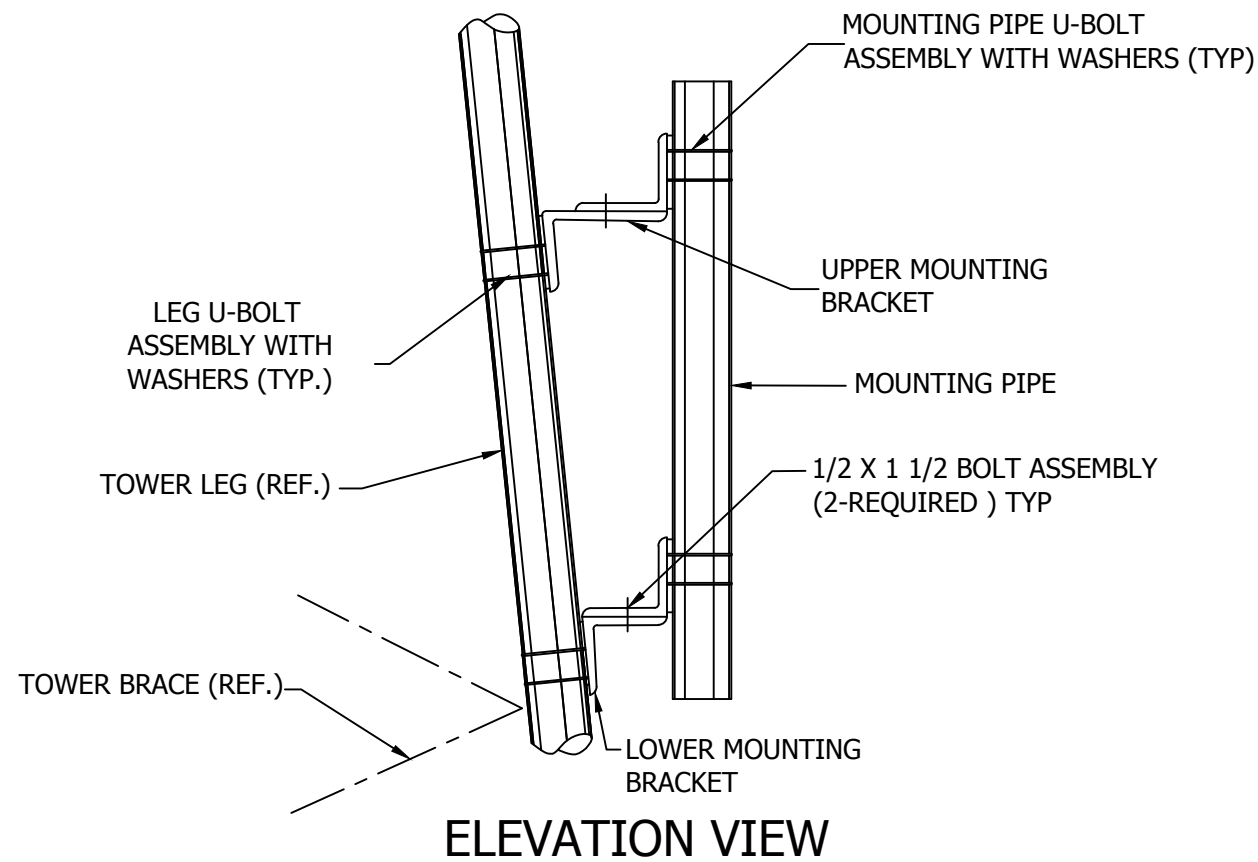
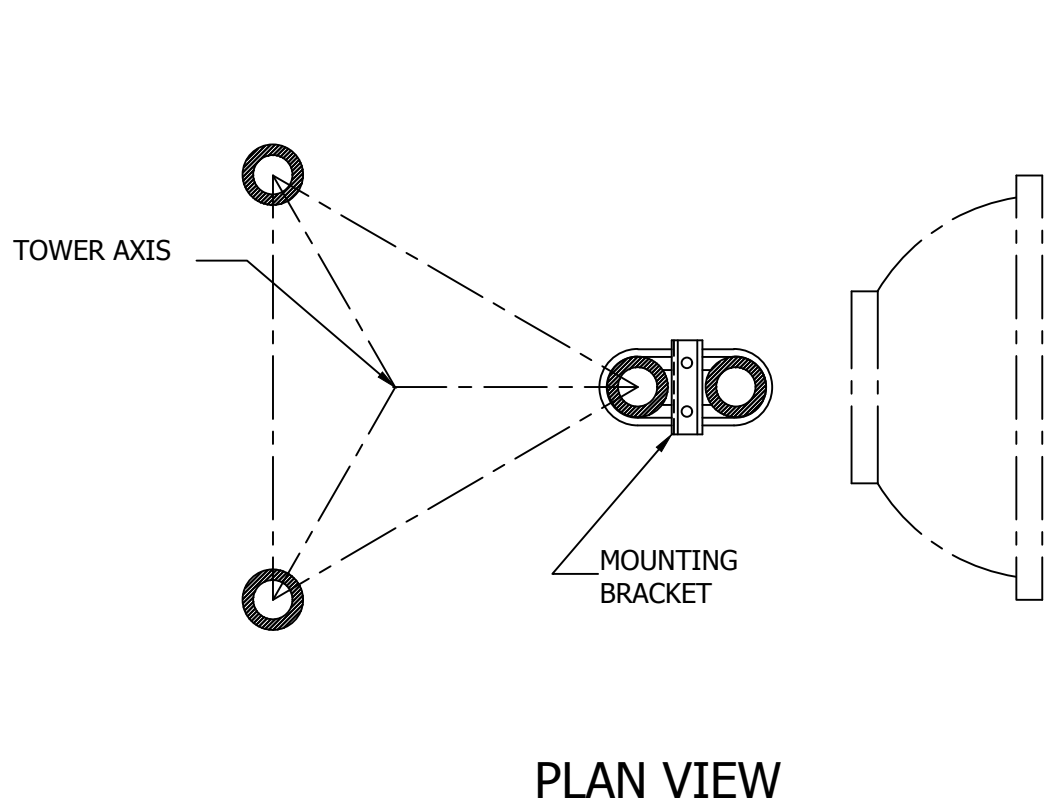
DISH MOUNTS WITH MOUNTING PIPE 4" STD. X 5'- 0" LG.

ASSEMBLY PT. NO.	TOWER LEG PIPE SIZE	LOWER BRACKET PT.NO. (1-REQ'D OF EACH)		UPPER BRACKET PT.NO. (1-REQ'D OF EACH)		MOUNTING PIPE PT.NO. (1-REQ'D)	LEG U-BOLT ASS'Y WITH WASHERS (4-REQUIRED)	MTG. PIPE U-BOLT ASS'Y W/WASHERS (4-REQUIRED)	CONNECTION BOLT ASS'Y 1/2 X 1 1/2 (4-REQUIRED)
T20UM	2"	VY1651	VY1651	VY1627	VY1627	KH279	JR83AW	JR85AW	210018GA
T25UM	2.5"	VY1651	VY1651	VY1627	VY1627	KH279	JR84AW	JR85AW	210018GA
T30UM	3"	VY1651	VY1651	VY1627	VY1627	KH279	JR88AW	JR85AW	210018GA
T35UM	3.5"	VY1651	VY1651	VY1627	VY1627	KH279	JR89AW	JR85AW	210018GA
T40UM	4"	VY1651	VY1651	VY1627	VY1627	KH279	JR85AW	JR85AW	210018GA
T50UM	5"	VY1651	VY1652	VY1627	VY1628	KH279	JR86AW	JR85AW	210018GA
T60UM	6"	VY1651	VY1652	VY1627	VY1628	KH279	JR87AW	JR85AW	210018GA

DISH MOUNTS WITH MOUNTING PIPE 4" STD. X 6'- 8" LG.

ASSEMBLY PT. NO.	TOWER LEG PIPE SIZE	LOWER BRACKET PT.NO. (1-REQ'D OF EACH)		UPPER BRACKET PT.NO. (1-REQ'D OF EACH)		MOUNTING PIPE PT.NO. (1-REQ'D)	LEG U-BOLT ASS'Y WITH WASHERS (4-REQUIRED)	MTG. PIPE U-BOLT ASS'Y W/WASHERS (4-REQUIRED)	CONNECTION BOLT ASS'Y 1/2 X 1 1/2 (4-REQUIRED)
T20HUM	2"	VY1651	VY1651	VY1627	VY1627	KH285	JR83AW	JR85AW	210018GA
T25HUM	2.5"	VY1651	VY1651	VY1627	VY1627	KH285	JR84AW	JR85AW	210018GA
T30HUM	3"	VY1651	VY1651	VY1627	VY1627	KH285	JR88AW	JR85AW	210018GA
T35HUM	3.5"	VY1651	VY1651	VY1627	VY1627	KH285	JR89AW	JR85AW	210018GA
T40HUM	4"	VY1651	VY1651	VY1627	VY1627	KH285	JR85AW	JR85AW	210018GA
T50HUM	5"	VY1651	VY1652	VY1627	VY1628	KH285	JR86AW	JR85AW	210018GA
T60HUM	6"	VY1651	VY1652	VY1627	VY1628	KH285	JR87AW	JR85AW	210018GA

NOTE: FLAT WASHERS ARE PROVIDED FOR ALL SLOTTED HOLES



GENERAL NOTES

1. MOUNTING BRACKETS MUST BE MOUNTED AS CLOSE TO A BRACE CLIP AS POSSIBLE.
2. FOR MOUNTING BRACKET FABRICATION SEE DRAWING NUMBER B800005 AND B800102.
3. FOR U-BOLT FABRICATION , SEE DRAWING NUMBER B651028.
4. FOR MOUNTING PIPE FABRICATION, SEE DRAWING NUMBER B770160.

FILE NO. Standard-SSV				
REVISIONS				
REV.	DESCRIPTION	DWN	CHK	APP
2	REDRAWN INTO AUTOCAD FORMAT	KB2	M.F	H.A
DATE: Jan/10/2007				

DWG REFERENCE	



6718 WEST PLANK ROAD
PEORIA, IL 61604
TOLL FREE 800-727-ROHN

THIS DRAWING IS THE PROPERTY OF ROHN. IT IS NOT TO BE REPRODUCED, COPIED OR TRACED IN WHOLE OR IN PART WITHOUT OUR WRITTEN CONSENT.

**DISH MOUNT
UNIVERSAL LEG FOR TAPERED SECTIONS**

DWN: AJG	CHK'D: MK	DATE: Dec/05/1981
----------	-----------	-------------------

ENG'R: TWS	
------------	--

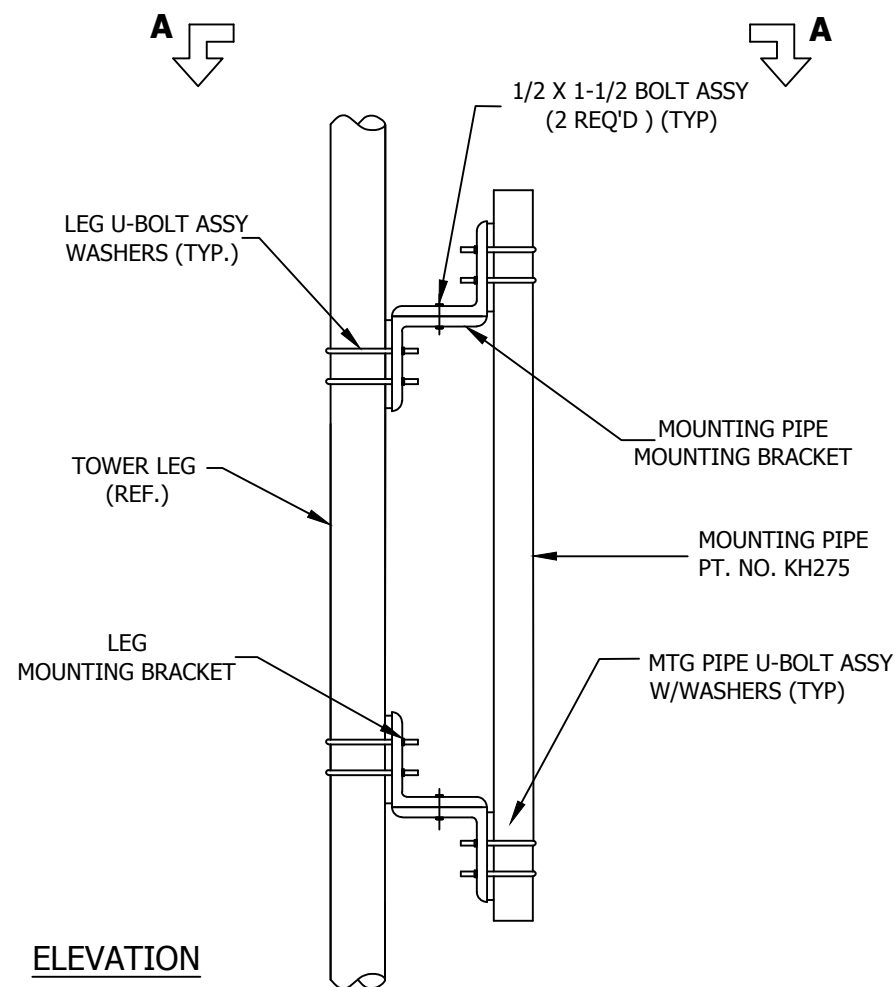
DRAWING NO: C800119	REV: 2
---------------------	--------

Jan/19/2007 1:20:25 PM

1:erection

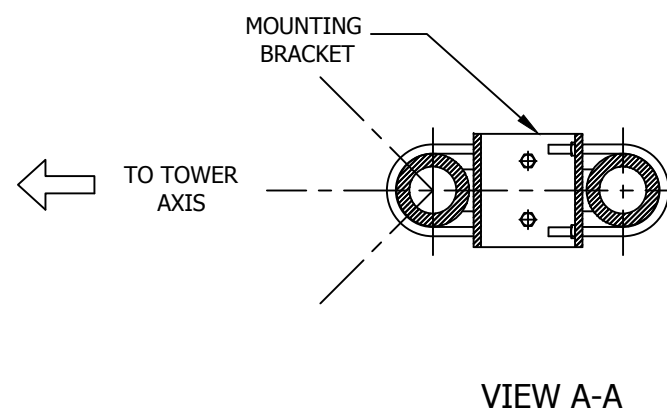
FILE NO. Standard-SSV				
REVISIONS				
REV.	DESCRIPTION	DWN	CHK	APP
6	REDRAWN IN AUTOCAD DATE: Nov/08/2006	KB3	JDM	H.A

ANTENNA MOUNTS (WITH 2STD X 5'- 0" MOUNTING PIPES)							
ASSEMBLY PT. NO.	TOWER LEG SIZE	LEG MTG BAKT (2 EACH REQ'D)	MTG PIPE MTG BRKT (2 EACH REQ'D)	LEG U-BOLT ASS'Y WITH WASHERS (4-REQ'D)	MOUNTING PIPE (1-REQ'D)	MTG. PIPE U-BOLT ASS'Y W/WASHERS (4 REQ'D)	CONNECTION BOLT ASSY 1/2 X 1-1/2 (4-REQ'D)
		DWG # B800005	DWG # B800005	DWG # B651028	DWG # B770160	DWG # B651028	DWG # C770404
VY3936A	2"	VY1627	VY1627	JR83AW	KH275	JR83AW	210018GA
VY3671A	2.5"	VY1627	VY1627	JR84AW	KH275	JR83AW	210018GA
VY3267A	3"	VY1627	VY1627	JR88AW	KH275	JR83AW	210018GA
VY3672A	3.5"	VY1627	VY1627	JR89AW	KH275	JR83AW	210018GA
VY4442A	4"	VY1627	VY1627	JR85AW	KH275	JR83AW	210018GA
VY3673A	5"	VY1628	VY1627	JR86AW	KH275	JR83AW	210018GA



GENERAL NOTES

- 1.MOUNTING BRACKETS MUST BE MOUNTED AS CLOSE AS POSSIBLE TO A BRACE CLIP.
- 2.FLAT WASHERS ARE PROVIDED FOR ALL SLOTTED HOLES.



DWG REFERENCE	



6718 WEST PLANK ROAD
 PEORIA, IL 61604
 TOLL FREE 800-727-ROHN

THIS DRAWING IS THE PROPERTY OF ROHN. IT IS NOT TO BE REPRODUCED, COPIED OR TRACED IN WHOLE OR IN PART WITHOUT OUR WRITTEN CONSENT.

DISH MOUNT
 ASSY STR LEG 2" X 5' MOUNTING PIPE

DWN: B_N	CHK'D: RAM	DATE: Oct/31/1983
ENG'R: TWS		
DRAWING NO: B831254	REV: 6	

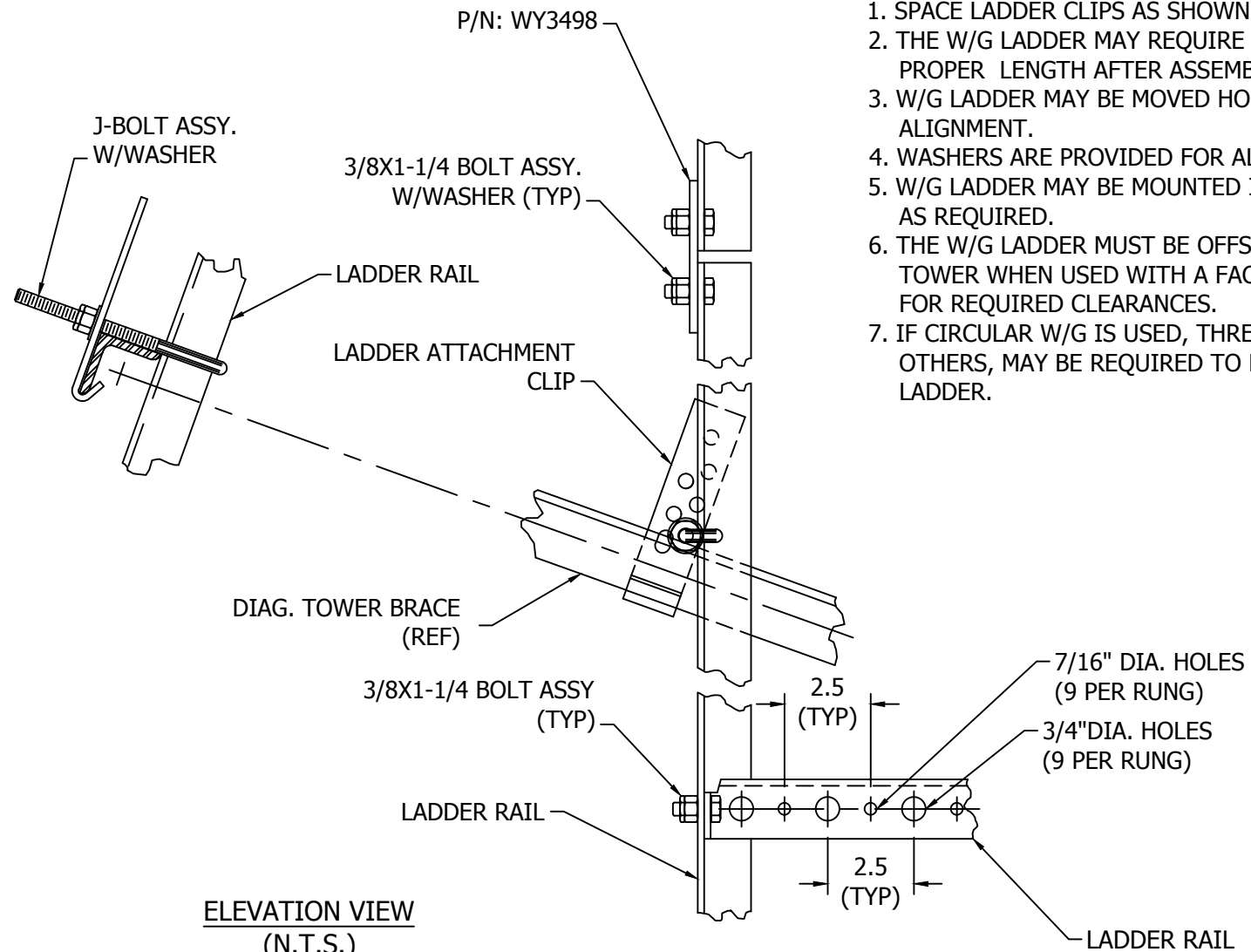
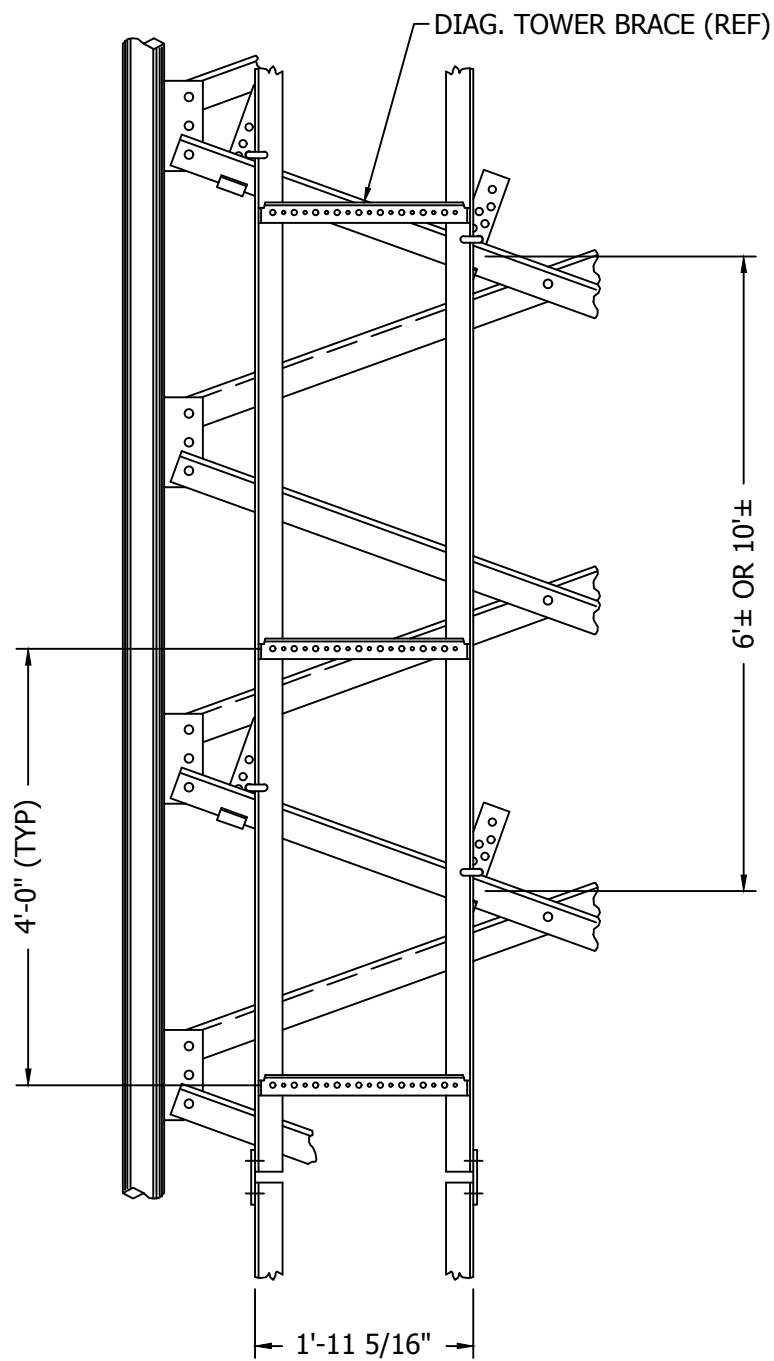
Nov/08/2006 2:36:03 PM

Erection

FILE NO.				
Standard-SSV				
REVISIONS				
REV.	DESCRIPTION	DWN	CHK	APP
2	REDRAWN INTO AUTOCAD DATE: Aug/10/2006	DLJ	JWS	H.A
3	1'-11 5/16" WAS 2'-0" DATE: May/30/2008	JDM	KTL	H.A

20' W/G LADDER SECTION BILL OR MATERIAL (WL20F94KD)				
ITEM	QTY.	PART NO.	DESCRIPTION	DWG. NO.
1	2	WY3425	ANGLE W/G LAD 1.5X.13X19.98ft.	C840372
2	5	WY8570	W/G LADDER RUNG 12GAX25.88in.	C991003
3	2	WY3498	BAR W/G LAD .25X1.5X7.25in.	B820868
4	4	250008G	WASHER 3/8 SAE FLAT HDG	C770404
5	14	210005GA	BOLT ASSY 3/8 X 1-1/4 HCS G5	C770404
6	6	H184	CLIP 1.5X.19X6.44" HDG	B991808
7	6	J170AW	J-BOLT ASSY 3/8 X 7-1/4 W/WASH	A771694

10' W/G LADDER SECTION BILL OR MATERIAL (WL10F94KD)				
ITEM	QTY.	PART NO.	DESCRIPTION	DWG. NO.
1	2	WY3426	ANGLE W/G LAD 1.5X.13X9.98ft.	C840372
2	3	WY8570	W/G LADDER RUNG 12GAX25.88in.	C991003
3	2	WY3498	BAR W/G LAD .25X1.5X7.25in.	B820868
4	4	250008G	WASHER 3/8 SAE FLAT HDG	C770404
5	10	210005GA	BOLT ASSY 3/8 X 1-1/4 HCS G5	C770404
6	4	H184	CLIP 1.5X.19X6.44" HDG	B991808
7	4	J170AW	J-BOLT ASSY 3/8 X 7-1/4 W/WASH	A771694



- NOTES:
1. SPACE LADDER CLIPS AS SHOWN.
 2. THE W/G LADDER MAY REQUIRE FIELD CUTTING TO THE PROPER LENGTH AFTER ASSEMBLY
 3. W/G LADDER MAY BE MOVED HORIZONTALLY FOR THE PROPER ALIGNMENT.
 4. WASHERS ARE PROVIDED FOR ALL SLOTTED HOLES.
 5. W/G LADDER MAY BE MOUNTED INSIDE OR OUTSIDE OF TOWER AS REQUIRED.
 6. THE W/G LADDER MUST BE OFFSET FROM THE CENTER OF THE TOWER WHEN USED WITH A FACE MOUNTED CLIMBING LADDER FOR REQUIRED CLEARANCES.
 7. IF CIRCULAR W/G IS USED, THREADED ADAPTERS, PROVIDED BY OTHERS, MAY BE REQUIRED TO PERFECTLY ALIGN W/G'S ON LADDER.

DWG REFERENCE	



6718 WEST PLANK ROAD
PEORIA, IL 61604
TOLL FREE 800-727-ROHN

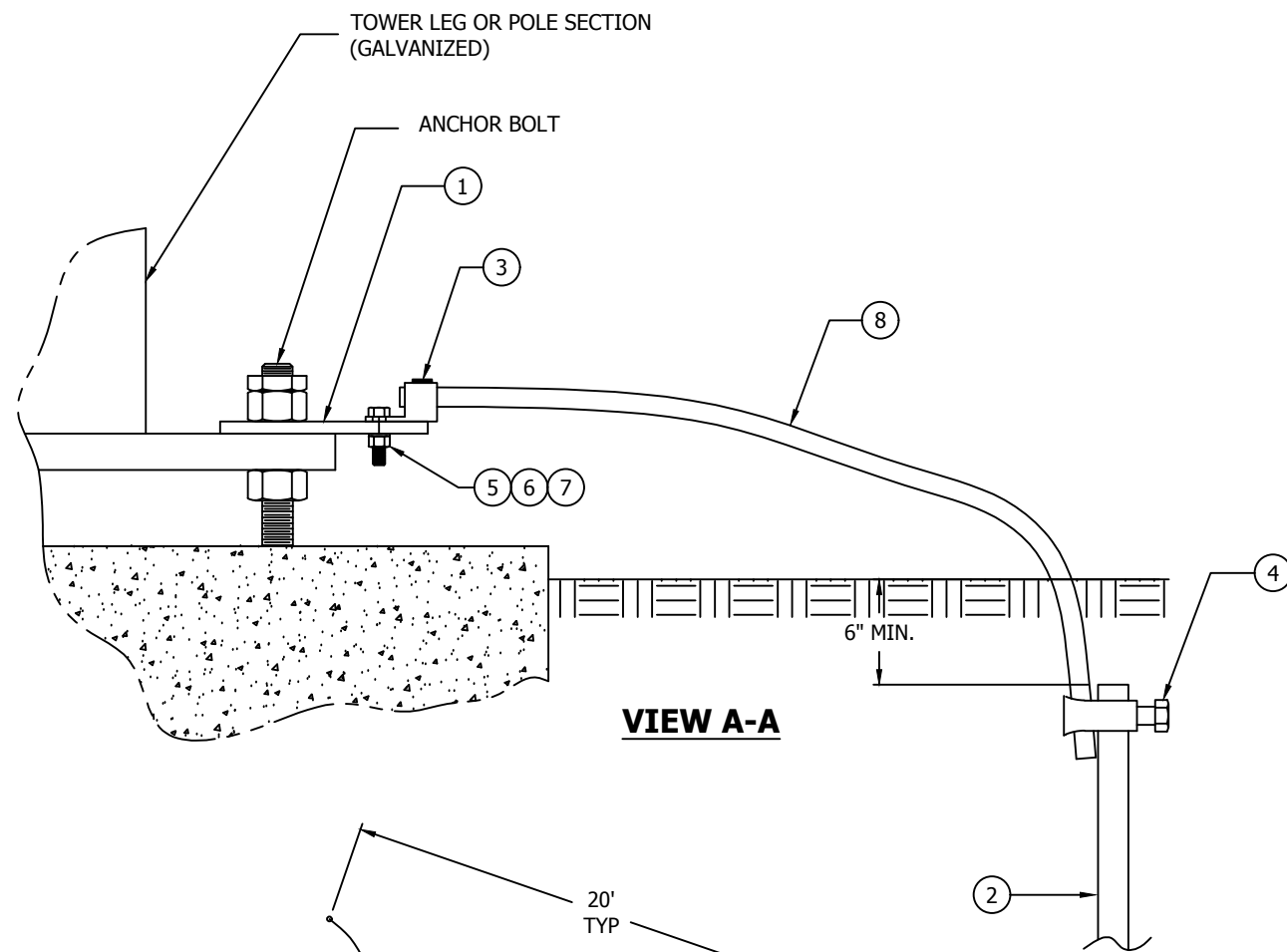
THIS DRAWING IS THE PROPERTY OF ROHN. IT IS NOT TO BE REPRODUCED, COPIED OR TRACED IN WHOLE OR IN PART WITHOUT OUR WRITTEN CONSENT.

TX LINE BRACKETS
FACE MTD 9 HOLE 4' KD 2.5"O.C.

DWN: SRH	CHK'D: TWS	DATE: May/10/1999
ENG'R: TWS		
DRAWING NO: C991018	REV: 3	

Jun/02/2008 1:02:10 PM

Erection



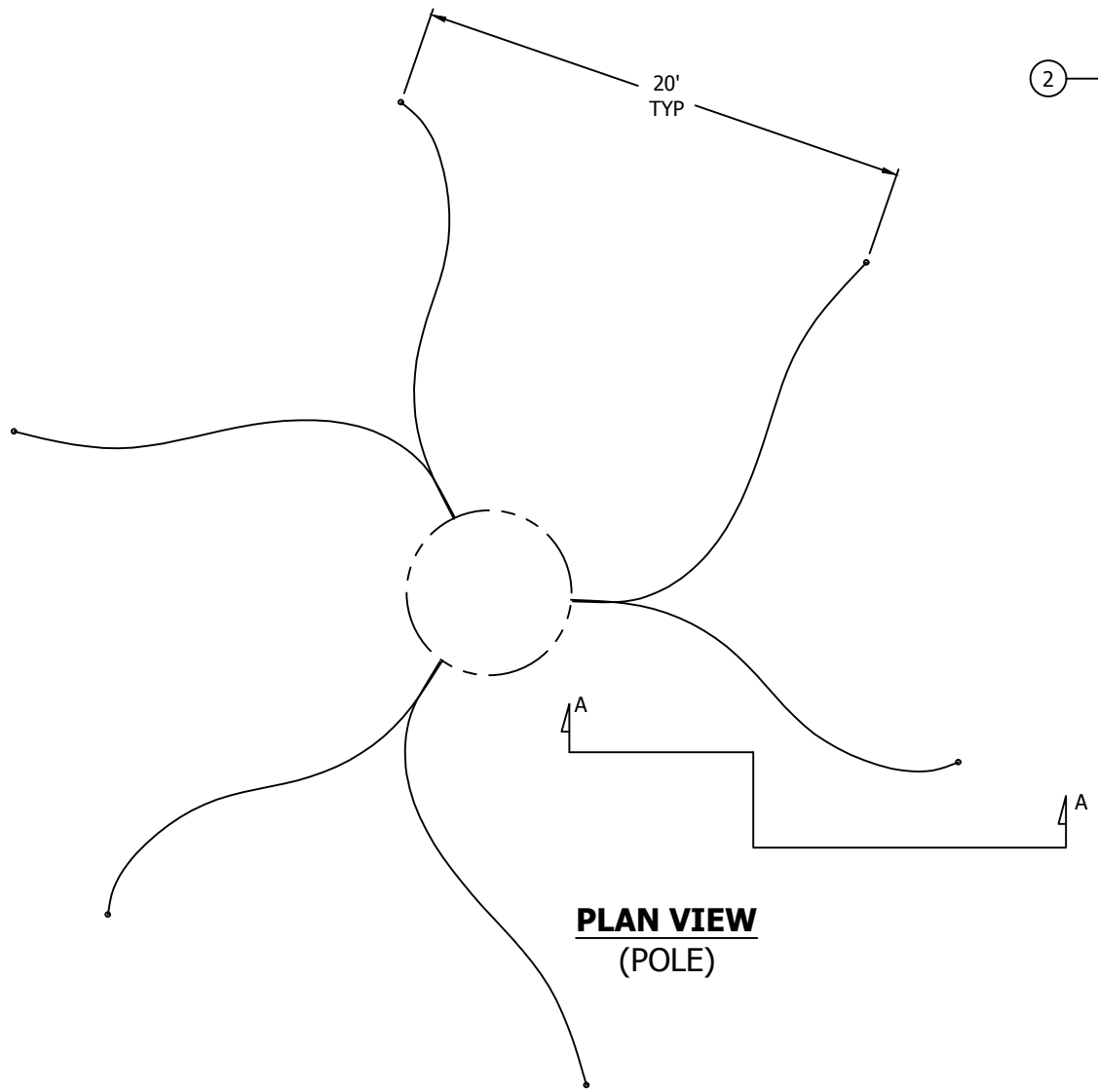
VIEW A-A

BILL OF MATERIAL			
ITEM	QTY	PART NO.	DESCRIPTION
1	1	SEE CHART	GROUND LUG
2	2	GR6250	ROD GROUND 5/8" X 10' HDG
3	1	ADR25-21	LUG, GALVAN 6 - 250 ALCU
4	2	340016T	CLAMP #8034 WB 3/4 TINNED
5	1	220830	SCREW CAP .25-20X1.00" S.S.
6	1	220831	NUT .25-20 HEX S.S.
7	2	250081	WASHER .25 STD FLAT SS
8	2	150400-30	7/16 6X25 EIP IWRC RRL 30'

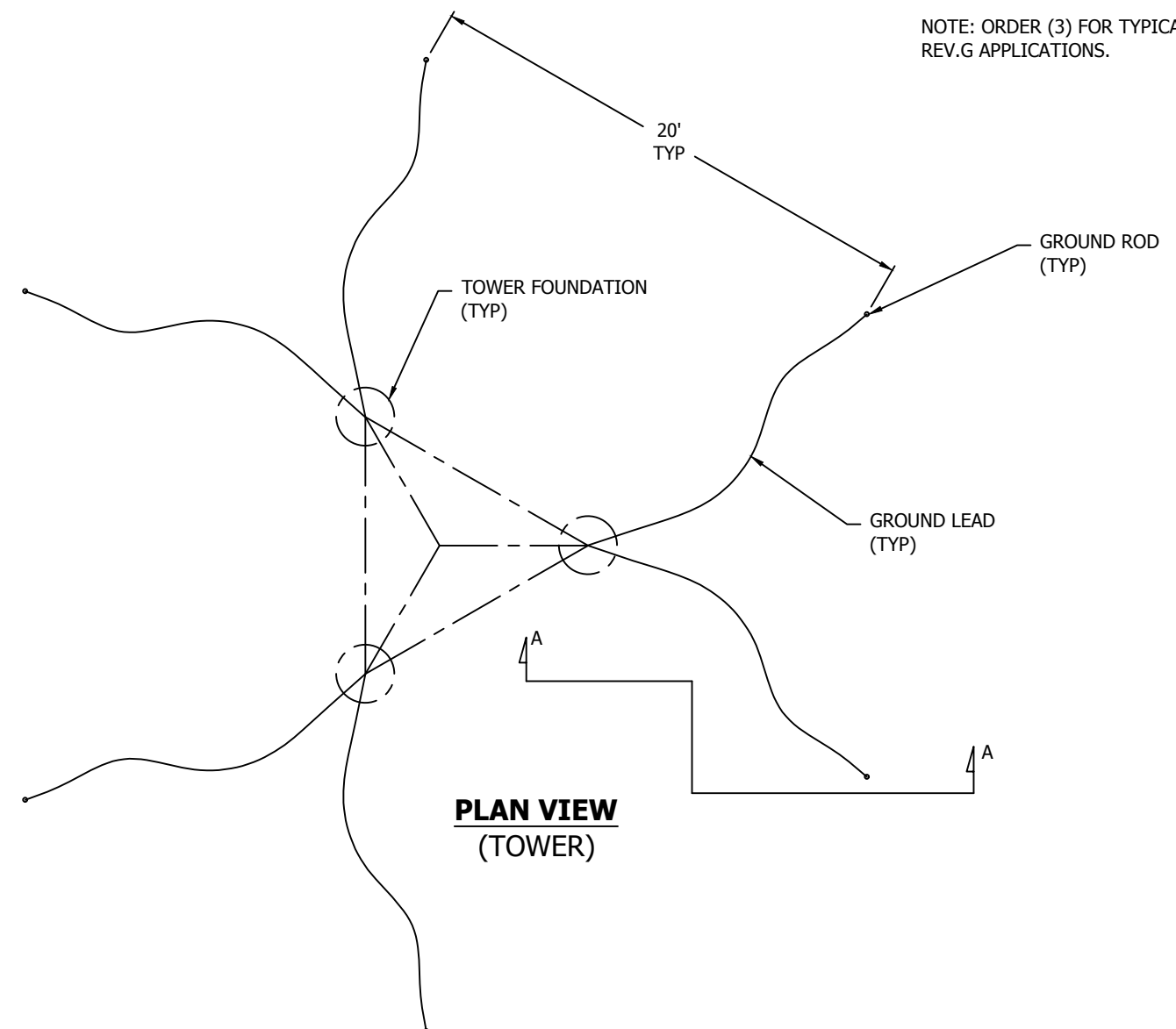
ANCHOR BOLT SIZE	GROUND PLATE
1/2"	GL4
5/8"	GL5
3/4"	GL6
7/8"	GL7
1"	GL8

ORDER INFO	
ANCHOR ROD SIZE	ASSY. P/N
1/2"	BGK4GGX
5/8"	BGK5GGX
3/4"	BGK6GGX
7/8"	BGK7GGX
1"	BGK8GGX

NOTE: ORDER (3) FOR TYPICAL REV.G APPLICATIONS.



PLAN VIEW (POLE)



PLAN VIEW (TOWER)

FILE NO.				
REVISIONS				
REV	DESCRIPTION	DWN	CHK	APP
4	ADDED POLE VIEW	JHY	JDM	HA
DATE: 05/09/2016				

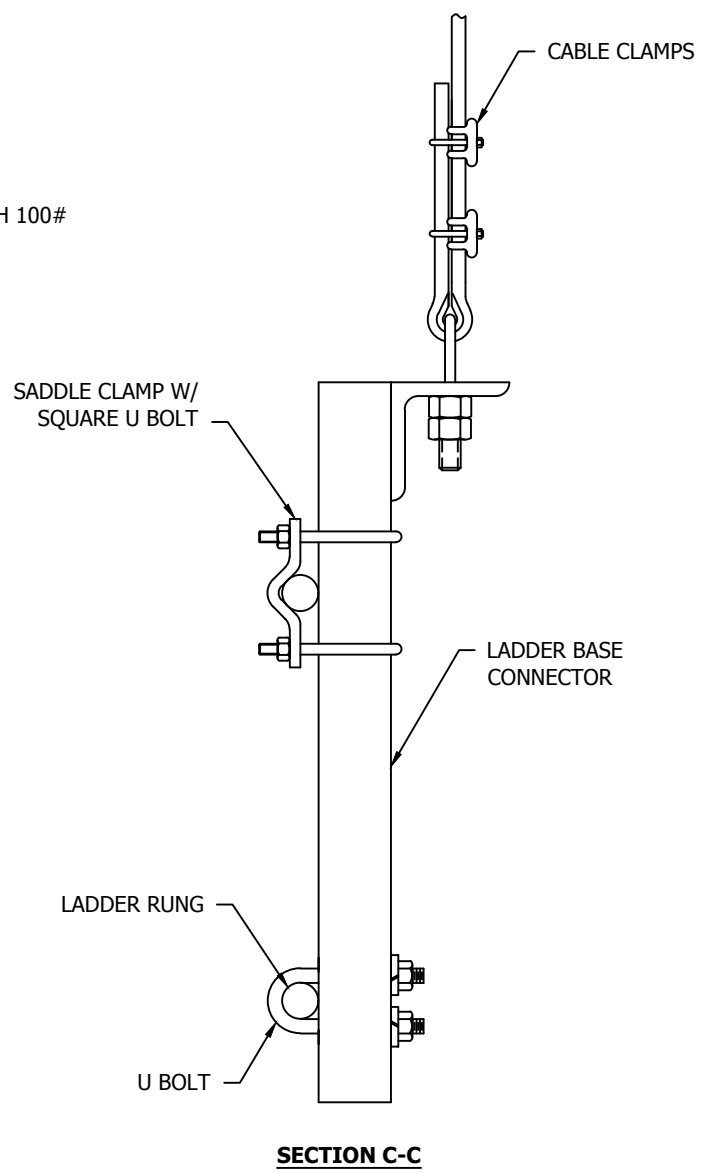
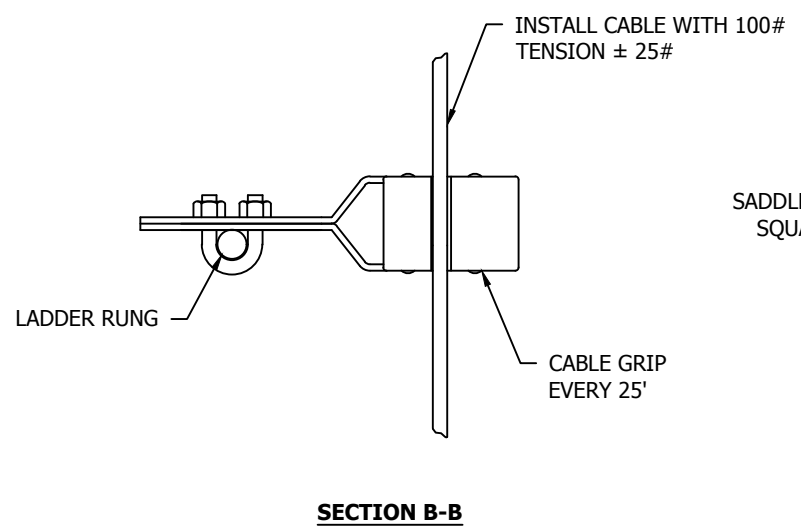
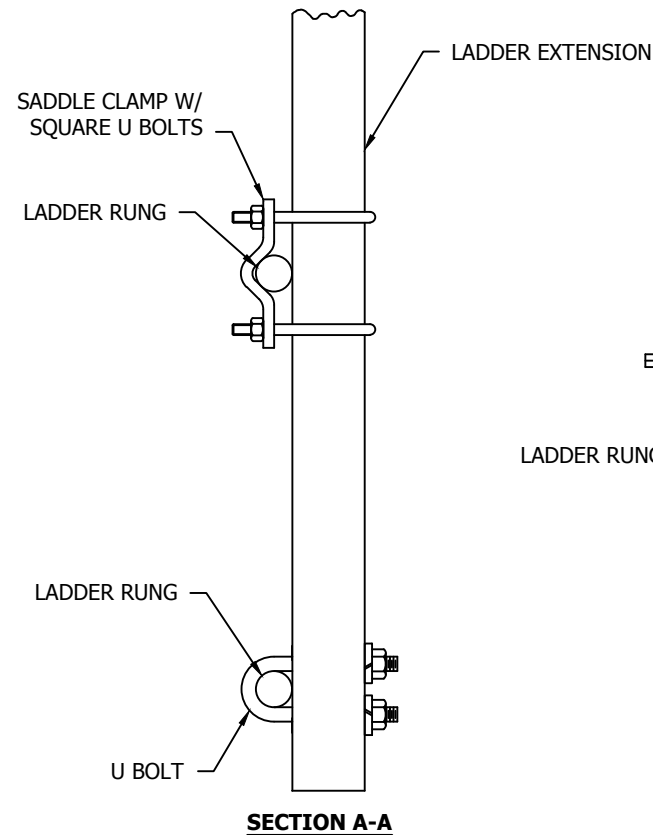
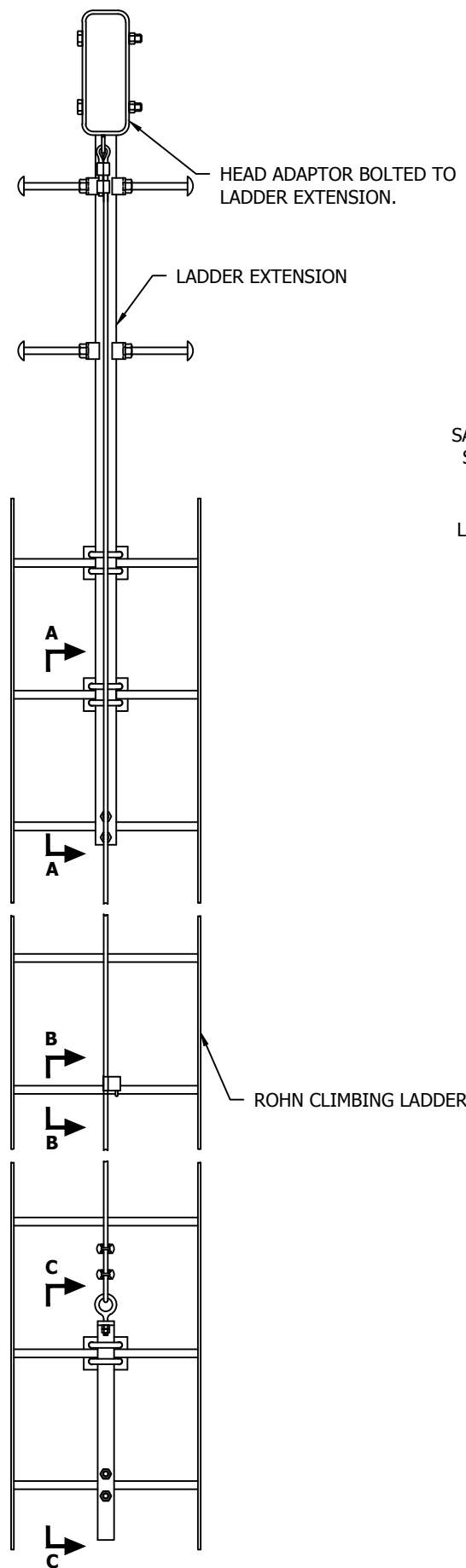


PO BOX 5999
PEORIA, IL 61601-5999
TOLL FREE 800-727-ROHN

THIS DRAWING IS THE PROPERTY OF ROHN. IT IS NOT TO BE REPRODUCED, COPIED OR TRACED IN WHOLE OR IN PART WITHOUT OUR WRITTEN CONSENT.

TIA-222-G STANDARD FOR SS TOWERS (GALV)

DWN:	CHK'D:	DATE:
JK	JDM	DEC/27/2007
ENG'R:	SHEET #:	
DWG	1 OF 1	
DRAWING NO:	REV:	
B070997	4	



FILE NO. **Standard-SSV**

REVISIONS				
REV.	DESCRIPTION	DWN	CHK	APP
1	ADDED INSTALL TENSION OF CABLE INFORMATION DATE: 08/07/12	ZAW	JDM	HA

DWG REFERENCE



PO BOX 5999
PEORIA, IL 61601-5999
TOLL FREE 800-727-ROHN

THIS DRAWING IS THE PROPERTY OF ROHN. IT IS NOT TO BE REPRODUCED, COPIED OR TRACED IN WHOLE OR IN PART WITHOUT OUR WRITTEN CONSENT.

DWG TUF TUG LADDER INSTALL

DWN: CHW	CHK'D: JDM	DATE: May/13/2010
ENG'R: HA		
DRAWING NO: DWG-0121		REV: 1

May/25/2010 10:47:45 AM

1\Frection\

FILE NO.

REVISIONS

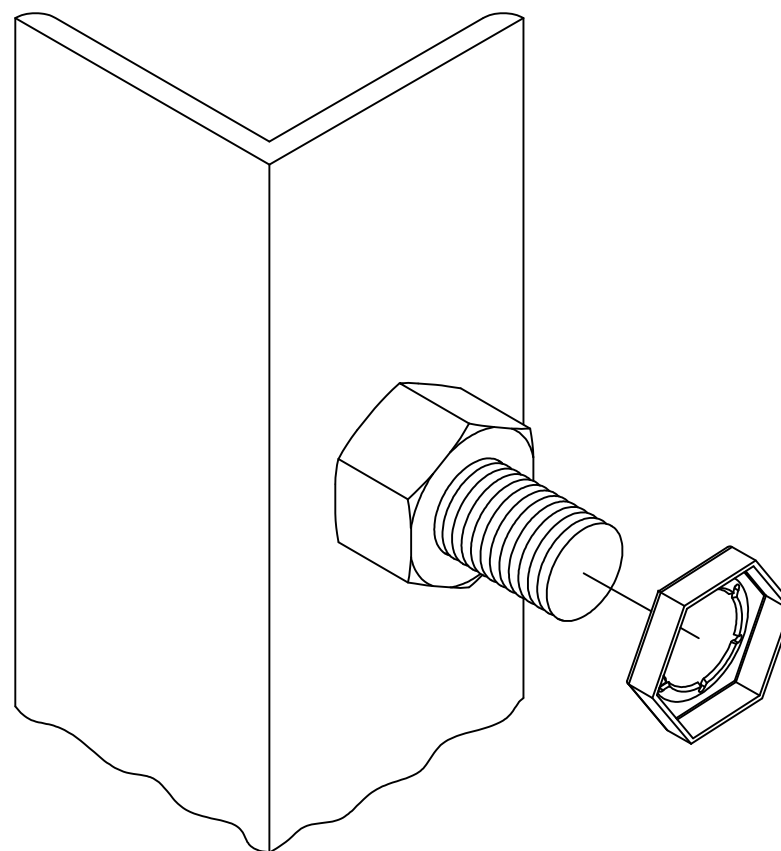
REV	DESCRIPTION	DWN	CHK	APP
7	CHANGE NOTATION. DATE: 01/11/12	JEC	JDM	HA

ASSEMBLY BOLT INSTALLATION

1. UNLESS OTHERWISE SPECIFIED, ASSEMBLY BOLTS AND ANCHOR BOLTS ARE TO BE TIGHTENED TO A SNUG TIGHT CONDITION (MEMBERS IN FIRM CONTACT) AND MUST INCLUDE A NUT LOCKING DEVICE. NO MINIMUM BOLT TENSION OR TORQUE VALUES ARE REQUIRED. WHEN LOCK WASHERS ARE PROVIDED AS A NUT LOCKING DEVICE, REPLACE ANY DAMAGED WASHERS DUE TO OVER TIGHTENING.
2. WASHERS ARE TO BE INSTALLED OVER SLOTTED HOLES.

PAL NUT INSTALLATION

1. PAL NUTS ARE TO BE INSTALLED AFTER NUTS ARE TIGHT AND WITH EDGE LIP OUT (SEE PICTURE). PAL NUTS ARE NOT REQUIRED WHEN SELF-LOCKING NUTS OR LOCK WASHERS ARE PROVIDED.



PO BOX 5999
 PEORIA, IL 61601-5999
 TOLL FREE 800-727-ROHN

THIS DRAWING IS THE PROPERTY OF ROHN. IT IS NOT TO BE REPRODUCED, COPIED OR TRACED IN WHOLE OR IN PART WITHOUT OUR WRITTEN CONSENT.

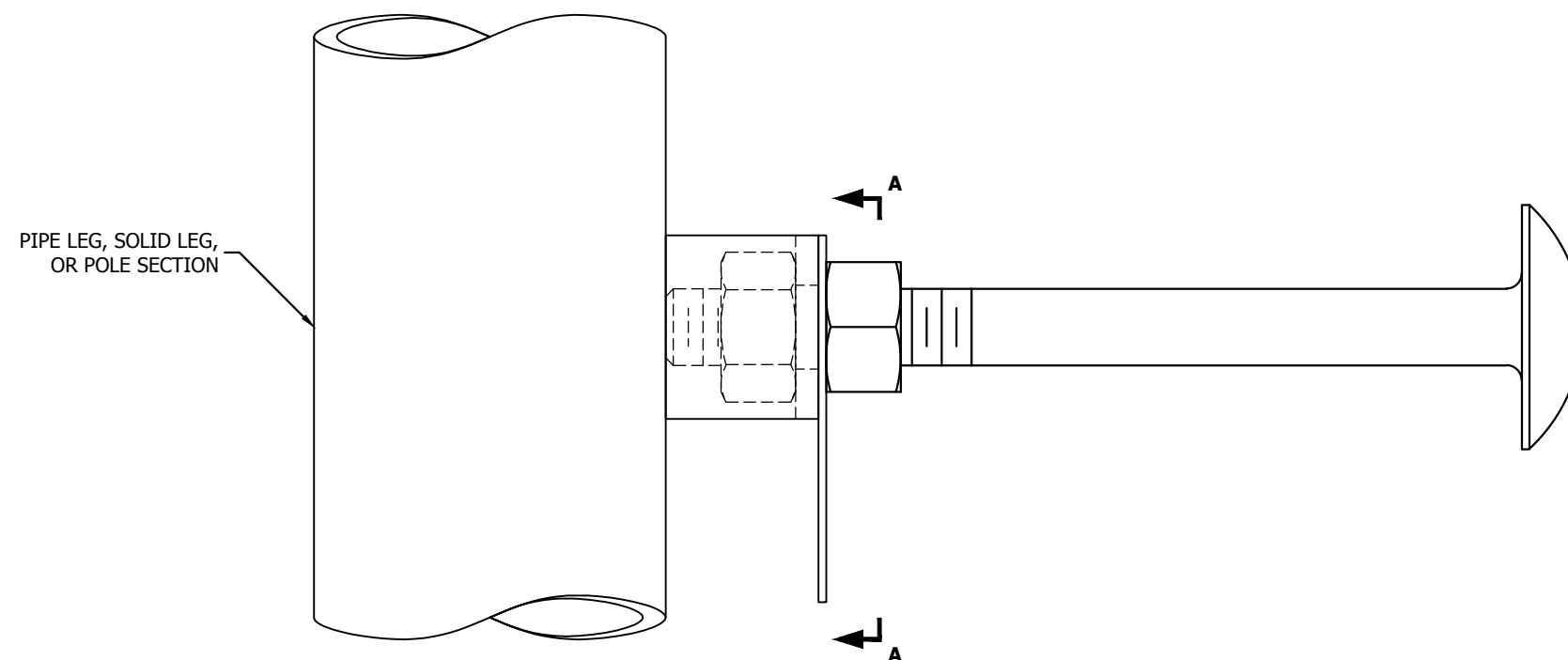
BOLT ASSEMBLY INSTALLATION

DWN:	OH	CHK'D:	GHB	DATE:	07/05/79
ENG'R:	TWS	SHEET #:	1 OF 1		
DRAWING NO:	A790135			REV:	7

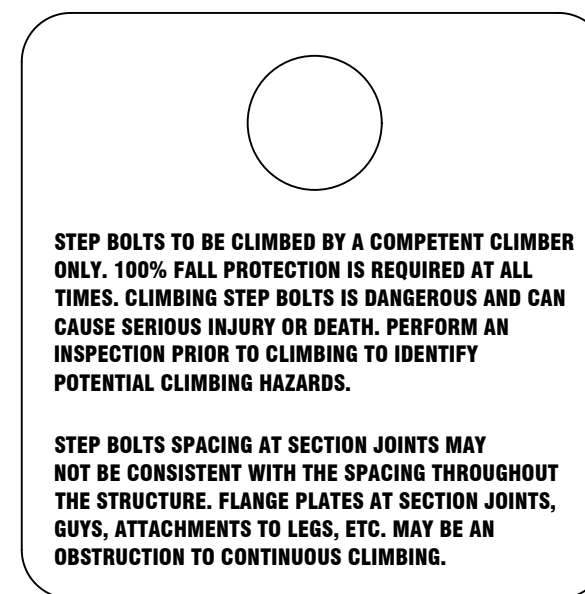
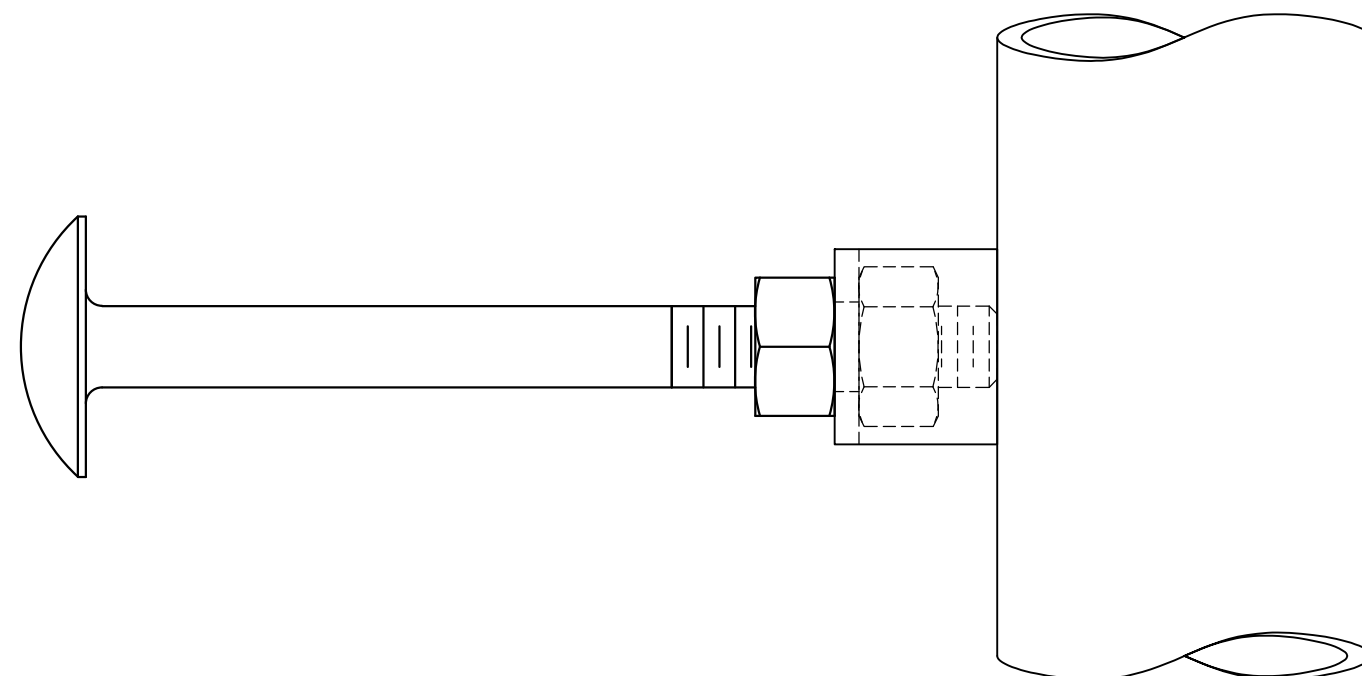
FILE NO.

REVISIONS

REV	DESCRIPTION	DWN	CHK	APP
6	UPDATED TITLE BLOCK DATE: 11/23/2015	JHY	JDM	HA



PIPE LEG, SOLID LEG,
OR POLE SECTION



VIEW A-A
STEP BOLT CLIMBING WARNING SIGN
 (INSTALL WARNING SIGN IN BOTTOM 5' OF STRUCTURE)

NOTE:

1. STEP BOLTS MUST BE TURNED UNTIL THE FRONT EDGE OF THE BOLT TOUCHES THE SIDE OF THE STRUCTURE.
2. STEP BOLTS ARE SUPPLIED FOR CONSTRUCTION PURPOSES AND ARE NOT INTENDED FOR USE BY UNQUALIFIED PERSONNEL.
3. DEVIATION FROM PERFECT ALIGNMENT IS ACCEPTABLE. SOME SPACING INCONSISTENCY MAY EXIST AT SPLICE LOCATIONS.
4. IF STEP BOLTS ARE BELIEVED TO PRESENT SAFETY PROBLEMS TO PERSONNEL, DO NOT INSTALL THE STEP BOLTS.



PO BOX 5999
 PEORIA, IL 61601-5999
 TOLL FREE 800-727-ROHN

THIS DRAWING IS THE PROPERTY OF ROHN. IT IS NOT TO BE REPRODUCED, COPIED OR TRACED IN WHOLE OR IN PART WITHOUT OUR WRITTEN CONSENT.

STEP BOLT INSTALLATION DETAIL

DWN: OH	CHK'D: TWS	DATE: 04/16/1974
ENG'R: CW	SHEET #: 1 OF 1	
PRJ. ENG'R:	PRJ. MANG'R:	
DRAWING NO: B651264	REV: 6	